



MARINE CATALOGUE

2024 - US edition

WWW.BLUEWAVE.DK


BLUE WAVE[®]
RIGGING HARDWARE

Information and contact

Should you have any questions or need further documentation, please refer to your local Blue Wave distributor or contact Blue Wave directly.

Please note that Blue Wave reserves the right to make changes to the catalog with no notification. Printing errors may occur.

Blue Wave A/S

H.C. Oerstedsvej 2
DK 6100 Haderslev
Denmark

Email:

bluewave@bluewave.dk

Website:

bluewave.dk

Phone:

+45 73 22 14 14

Innovative stainless steel solutions since 1932

Blue Wave has manufactured innovative stainless steel wire solutions since 1932. Our main markets are the marine, architecture and safety sectors, but the Blue Wave portfolio is broad and our components can be found in various projects around the world.

Based in Denmark, we pride ourselves of our sleek Scandinavian design and high standard. As a family- owned business we have gained a close relationship to our customers through generations.

With an innovative mindset and investment in high tech machinery, we are constantly in development which enables us to follow market demand and meet our clients' needs. The extensive product range focuses on good design, low weight and optimum strength.

Blue Wave is ISO 9001 certified.

CONTENTS

4

Turnbuckles

7

Quick racing turnbuckles

12

Threaded fittings

16

Swage fittings

26

Swageless fittings

34

Lifeline fittings

42

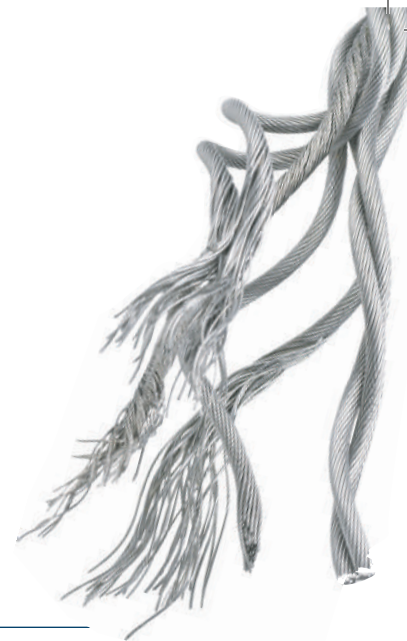
Rope fittings

46

Toggles

50

Accessories



TURNBUCKLES

Chromed bronze body turnbuckles for exclusive and durable rigging. The sleek open body prevents threads from seizing up and is easy to inspect and maintain. Delivered with laser engraved thread size and LH thread side marking. Supplied with cotter pins for locking as standard. SMART pins available on request.

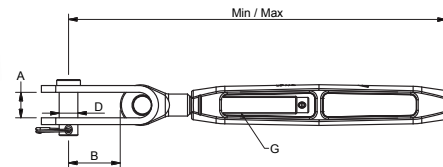


TURNBUCKLE TOGGLE LH

Polished stainless steel - AISI 316 - chromed bronze body

ART. NO.	G	A	B	D	MIN - MAX	BL/LB	LB/100	PACK
330006AS	1/4"	5/16"	21/32"	1/4"	5 5/16" - 6 1/2"	2866	17.9	10
330008AS	5/16"	13/32"	25/32"	5/16"	6 3/4" - 8 3/16"	4850	35.5	10
330010AS	3/8"	15/32"	1 1/32"	3/8"	8" - 9 1/2"	7496	60.6	5
330011AXS	7/16"	19/32"	1 1/8"	7/16"	8 3/4" - 10 1/2"	10141	94.5	5
330012AXS	1/2"	23/32"	1 3/8"	1/2"	9 5/8" - 11 9/10"	13448	127.2	5
330016AXS	5/8"	25/32"	1 5/8"	5/8"	12 1/4" - 14 7/8"	21826	235.2	BULK
330020AXS	3/4"	15/16"	1 25/32"	3/4"	14 5/32" - 17 3/8"	31747	410.7	BULK
330022AXS	7/8"	1 1/32"	1 15/16"	7/8"	17 1/8" - 20 3/4"	43211	710.1	BULK
330025AXS	1"	1 5/32"	2 5/16"	1"	20 1/4" - 24 7/8"	47179	1074.8	BULK

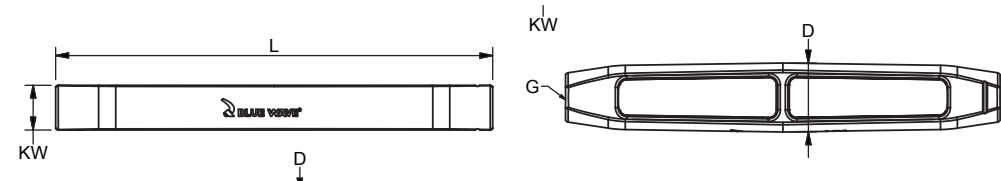
Note: All break loads are determined by clevis pin and thread



CHROMED BRONZE BODIES UNF

Chromed bronze

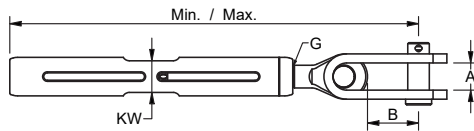
ART. NO.	G	L	D	KW	BL/KG
011306A	1/4"	100	14	9	1300
011308A	5/16"	120	17	11	2200
011310A	3/8"	135	20,5	13	3400
011311A	7/16"	150	24	15	4600
011312A	1/2"	170	27	17,4	6100
011316A	5/8"	210	32	20,7	9900
011320A	3/4"	250	38	25,4	14400
011322A	7/8"	305	46	30	19600
011325A	1"	366	55	35	21400
011327A	1 1/8"	376	56	40	27600
011330A	1 1/4"	418	62	42	34600
011336A	1 3/8"	460	68	48	42400
011342A	1 5/8"	570	78	56	63200



APEX TURNBUCKLE

Polished stainless steel - AISI 316 with bronze inserts

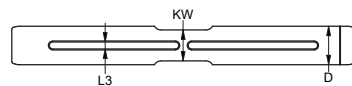
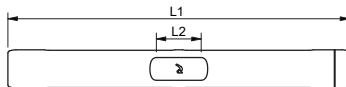
ART. NO.	G	PIN	A	B	MIN - MAX	KW	BL/KG	KG/100
240012AXS	1/2"	12,7	18	35	245 - 297	18	6100	58,4
240016AXS	5/8"	15,7	20	40	310 - 378	22	9900	111,4
240020AXS	3/4"	19	24	45	386 - 467	28	14400	204,6
240022AXS	7/8"	22	26	49	435 - 529	31	19600	321,7
240025AXS	1"	25,4	29	56	514 - 633	33	21400	480,5
240027AXS	1 1/8"	28	34	62	542 - 666	39	27600	615,7
240030AXS	1 1/4"	32	40	73	604 - 739	42	34600	890,7
240036AXS	1 3/8"	35	44	81	660 - 811	45	42400	1116,6
240042AXS	1 5/8"	40	48	99	810 - 1006	55	63200	1724



APEX BODIES

Polished stainless steel - AISI 316 with bronze inserts

ART. NO.	G	D	L1	L2	L3	KW	BL/KG	KG/100
012412A	1/2"	22	170	26	6,5	18	6100	27,3
012416A	5/8"	26	210	30	6,5	22	9900	46,4
012420A	3/4"	34	250	39	6,5	28	14400	96,1
012422A	7/8"	38	305	44	7,5	31	19600	153,5
012425A	1"	41	366	48	7,5	33	21400	203,1
012427A	1 1/8"	46	376	54	7,5	39	27600	252,5
012430A	1 1/4"	51	418	58	8,5	42	34600	358,8
012436A	1 3/8"	56	460	65	8,5	45	42400	480,1
012442A	1 5/8"	64	570	74	10,5	55	63200	727,5





QUICK RACING TURNBUCKLES

Blue Wave quick race tuning turnbuckles for racing, dinghies and small keelboats.

QRT rigging screws feature

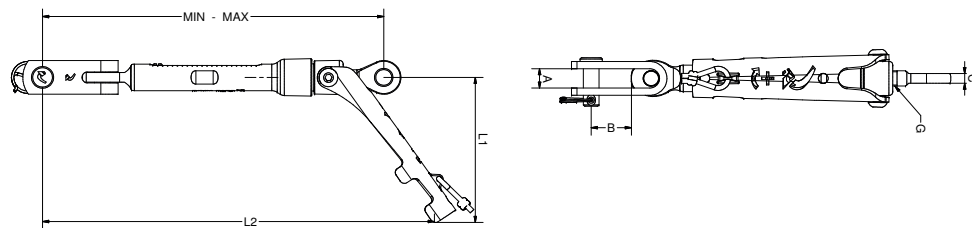
- Flexible toggle fork
- Laser engraved calibration scale for precise adjustment
- Handle for one end quick adjustment and easy locking
- AISI 316 stainless steel body and terminal with chromed bronze nut
- Wire sizes from 2,5 to 10 mm

Note: The level indicator pin is to be used as an indicator and not as a stop. Do not use any force when the pin has reached the edge at level 0; it will cause it to break off. It is not permitted to adjust the length of the QRT turnbuckle under full load. Tensioning below the WLL is permitted. It is advisable first to adjust roughly the length of the turnbuckle and then load the turnbuckles to a certain tension. The tension may not exceed the full capacity (WLL).

QUICK RACE TUNING - QRT - TOGGLE/EYE

Polished stainless steel - AISI 316 - calibrated

ART. NO.	G	PIN	A	B	C	L1	L2	MIN - MAX	BL/KG	KG/100
QRT19014G	1/4"	5	8	14	4	56	169	137 - 177	800	13,4
QRT19014	1/4"	6,35	8	16	4	56	169	139 - 179	1300	14,3
QRT19516	5/16"	8	10	20	5	60	201	173 - 223	2200	24,7
QRT19716	7/16"	11,1	15	30	8	80	257	223 - 293	4600	60,7
QRT19012	1/2"	12,7	18	34	10	110	285	173 - 223	6100	91,4
QRT19058	5/8"	15,9	20	38	12	126	358	223 - 293	9700	163,7



Note: The level indicator pin is to be used as an indicator and not as a stop. Do not use any force when the pin has reached the edge at level 0; it will cause it to break off.

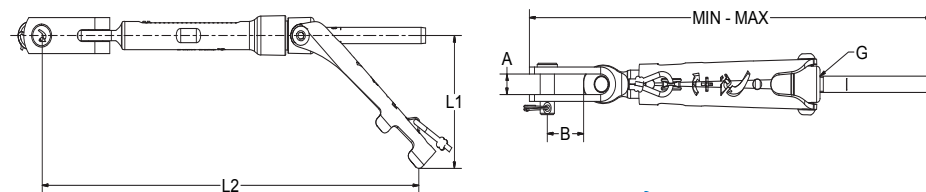


Community Design Registration 2012
design reg. -002094003-001

QUICK RACE TUNING - QRT - TOGGLE/STUD

Polished stainless steel - AISI 316 - calibrated

ART. NO.	WIRE	G	PIN	A	B	L1	L2	MIN - MAX	BL/KG	KG/100
QRT250145	2,5	-	1/4"	5	8	14	52	159 - 199	800	13,2
QRT25014	2,5	-	1/4"	6,35	8	16	52	161 - 201	1000	14,3
QRT300145	3	-	1/4"	5	8	14	52	170 - 210	800	13,6
QRT03014	3	-	1/4"	6,35	8	16	52	172 - 212	1300	14,6
QRT320145	3,2	1/8"	1/4"	5	8	14	52	169 - 210	800	13,6
QRT32014	3,2	1/8"	1/4"	6,35	8	16	52	169 - 212	1300	14,6
QRT04516	4	5/32"	5/16"	8	10	20	60	201 - 251	1700	23,9
QRT05516	5	3/16"	5/16"	8	10	20	60	208 - 258	2200	24,8
QRT06716	6	-	7/16"	11,1	15	30	80	265 - 335	4600	60,7
QRT07716	7	9/32"	7/16"	11,1	15	30	80	272 - 342	4600	62,8
QRT08012	8	5/16"	1/2"	12,7	18	34	110	332 - 411	6100	98,7
QRT08058	8	5/16"	5/8"	15,9	20	38	126	375 - 475	8700	165,5



Note: The level indicator pin is to be used as an indicator and not as a stop. Do not use any force when the pin has reached the edge at level 0; it will cause it to break off.



Community Design Registration 2012
design reg. -002094003-001



PERFORMANCE, RELIABILITY AND DESIGN - THE QRT TURNBUCKLE MEETS THEM ALL

"Blue Wave is fast, efficient and it is fit for purpose, and like all good design the QRT turnbuckle being accepted as a given. We have run the gauntlet of Class, measurers, ISAF plus a testing procedure, and I am pleased to see the team are embracing this new technology.



Julian Bethwaite
49'er designer



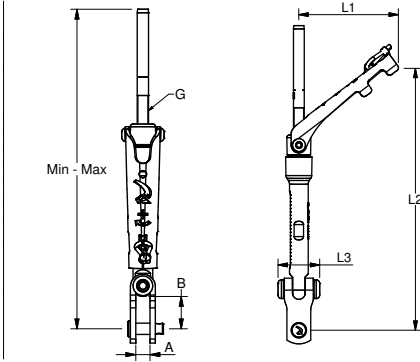
Community Design Registration 2012
design reg. -002094003-001



QUICK RACE TUNING - QRT - REINFORCED TOGGLE

Polished stainless steel - AISI 316

ART. NO.	WIRE	G	PIN	A	B	L1	L2	L3	MIN - MAX	BL/KG	KG/100	
QRT25014S	2,5	-	1/4"	6,35	8	18	52	169	25	161 - 201	1000	15,4
QRT03014S	3	-	1/4"	6,35	8	18	52	169	25	172 - 212	1300	15,7
QRT32014S	3,2	1/8"	1/4"	6,35	8	18	52	169	25	172 - 212	1300	15,7



Community Design Registration 2012
design reg. -002094003-001



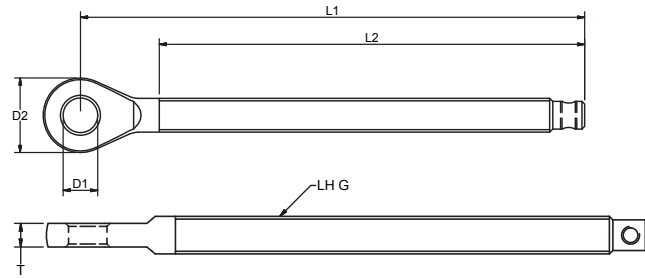
Note: The level indicator pin is to be used as an indicator and not as a stop. Do not use any force when the pin has reached the edge at level 0; it will cause it to break off.

THREAD EYE STUD - QRT SPARE PART

Polished stainless steel - AISI 316/Screw - Rig Rod 1,4462

ART. NO.	LH G	D1	D2	L1	L2	T	BL/KG	KG/100
QT031906AM	1/4"	6,5	14	95	80	4	1300	2,8
QT031908AM	5/16"	8,5	17	125	93	5	2200	5,3
QT031911AM	7/16"	11,5	24	153	110	8	4600	13,2
QT031912AM	1/2"	13	28	181	143	10	6100	20,6
QT031916AM	5/8"	16,5	36	216,5	175	12	9900	38,2

Note: Stud including screw
The user is responsible for correct assembly



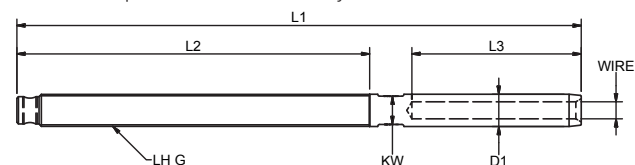
For replacement, Blue Wave offers spare parts to the QRT range. The studs are supplied with loose adjustment scale screws. Use with Loctite.

THREAD STUD - QRT SPARE PART

Polished stainless steel - AISI 316/Screw - Rig Rod 1,4462

ART. NO.	WIRE	LH G	D1	L1	L2	L3	KW	BL/KG	KG/100	
QT902506AM	2,5	-	1/4"	5,5	117	80	27	-	1300	2,6
QT903006AM	3	-	1/4"	6,35	128	80	38	-	1300	3,1
QT903206AM	3,2	1/8"	1/4"	6,35	128	80	38	-	1300	3,1
QT900408AM	4	5/32"	5/16"	7,5	153	93	45	-	2200	4,7
QT900508AM	5	3/16"	5/16"	9	159	93	51	-	2200	5,5
QT900611AM	6	-	7/16"	12,58	195	118	64	-	4600	13,5
QT900711AM	7	9/32"	7/16"	14,2	202	118	70	-	4600	15,6
QT900812AM	8	-	1/2"	16	248	143	84	-	6100	27,1
QT900816AM	8	5/16"	5/8"	16	280	175	84	14	9900	40
QT901016AM	10	-	5/8"	17,8	295	175	89	15	9900	44,3

Note: Stud including screw
The user is responsible for correct assembly



MONO RACE TUNING - MRT - TOGGLE/STUD

Polished stainless steel - AISI 316 - calibrated



A highly sophisticated turnbuckle from the Blue Wave racing line. It features an adjustment nut in black chromed high quality alu bronze, engraved calibration scale for fast and accurate adjustment of the rig tension and an extra long thread stud.

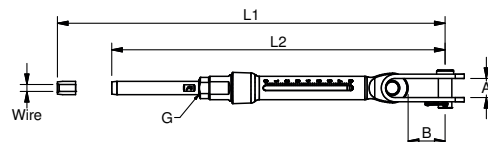
Note: The level indicator pin is to be used as an indicator and not as a stop. Do not use any force when the pin has reached the edge at level 0; it will cause it to break off.

ART. NO.	WIRE	G	PIN	A	B	L1	L2	BL/KG	KG/100	PACK	
MRT03014	3	-	1/4"	6,35	8	17	233	193	1300	11,4	BULK
MRT03214	-	1/8"	1/4"	6,35	8	17	233	193	1300	11,4	BULK
MRT04014	4	5/32"	1/4"	6,35	8	17	256	216	1300	12,2	BULK
MRT04516	4	-	5/16"	8	10	20	271	221	1700	19,2	BULK
MRT05516	5	3/16"	5/16"	8	10	20	277	227	2200	20	BULK
MRT05038	5	-	3/8"	9,5	12	26	323	263	2400	35,1	BULK
MRT06716	6	-	7/16"	11	15	28	353	283	4600	56,3	BULK
MRT06012	6	-	1/2"	12,7	18	35	414	334	5400	79,9	BULK
MRT63012	-	1/4"	1/2"	12,7	18	35	414	334	5200	80,4	BULK
MRT07716	7	-	7/16"	11	18	28	375	305	4600	60,2	BULK
* MRT07012	7	-	1/2"	12,7	18	35	422	342	6100	80,5	BULK
* MRT08012	8	-	1/2"	12,7	18	35	436	356	6100	84,4	BULK
* MRT08058	8	-	5/8"	16	20	41	510	410	8700	142,8	BULK
* MRT10058	10	-	5/8"	16	20	41	561	461	9700	146,4	BULK
*! MRT10034	10	-	3/4"	19	24	45	598	478	9700	260	BULK
* MRT12034	12	-	3/4"	19	24	45	629	509	14200	273	BULK
* MRT14078	14	-	7/8"	22	26	49	698	568	15900	420,5	BULK
* MRT16110	16	-	1"	25,4	29	59	820	660	19400	616,4	BULK

! Note: Stud OD. = 21,4 mm

The user is responsible for choosing the proper cable diameter and for correct assembly

MRTs marked with "*" on request only



MONO STANDARD TUNING - MST - TOGGLE/STUD

Polished stainless steel - AISI 316

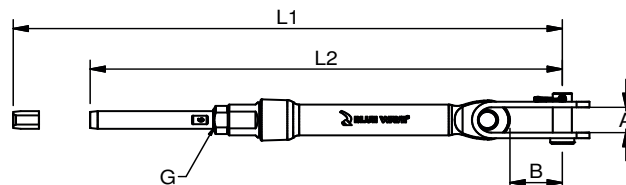


A highly sophisticated turnbuckle. A price friendly alternative to the Blue Wave racing line with all the features except the calibration scale. It features an adjustment nut in chromed high quality alu bronze and an extra long thread stud.

ART. NO.	WIRE	G	PIN	A	B	L1	L2	BL/KG	KG/100	PACK	
MST03014	3	-	1/4"	6,35	8	17	233	193	1300	11,8	BULK
MST32014	-	1/8"	1/4"	6,35	8	17	233	193	1300	11,8	BULK
MST04014	4	5/32"	1/4"	6,35	8	17	256	216	1300	12,6	BULK
MST04516	4	5/32"	5/16"	8	10	20	271	221	1700	19,7	BULK
MST05516	5	3/16"	5/16"	8	10	20	277	227	2200	20,5	BULK
MST05038	5	3/16"	3/8"	9,5	12	26	323	263	2400	36,1	BULK
MST06716	6	-	7/16"	11	15	28	375	305	4600	57,5	BULK
MST06012	6	-	1/2"	12,7	18	35	414	334	5400	81,7	BULK
MST07716	7	9/32"	7/16"	11	15	28	353	283	4600	60	BULK
* MST07012	7	9/32"	1/2"	12,7	18	35	422	342	6100	82,2	BULK
* MST08012	8	5/16"	1/2"	12,7	18	35	436	356	6100	86,1	BULK
* MST08058	8	5/16"	5/8"	16	20	41	510	410	8700	146,9	BULK
* MST10058	10	-	5/8"	16	20	41	561	461	9700	150,5	BULK
* MST10034	10	-	3/4"	19	24	45	598	478	9700	264,7	BULK
*! MST12034	12	-	3/4"	19	24	45	629	509	14200	277,8	BULK
* MST14078	14	-	7/8"	22	26	49	698	568	15900	425,7	BULK
* MST16110	16	-	1"	25,4	29	59	820	660	19400	622,8	BULK

! Note: Stud OD. = 21,4 mm

The user is responsible for choosing the proper cable diameter and for correct assembly





THREADED FITTINGS

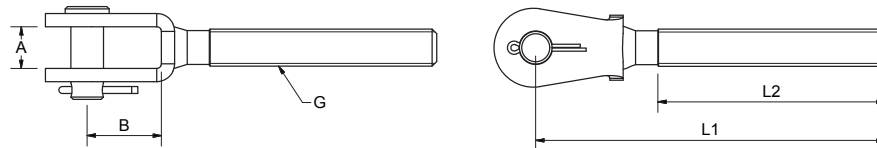
WELDED THREAD FORKS METRIC

Polished stainless steel - AISI 316



ART. NO. RIGHT	ART. NO. LEFT	G	PIN	A	B	L1	L2	BL/KG	KG/100	PACK
021205B	031205B	M5	5	7,5	12,2	60	41	800	1,9	10
021206B	031206B	M6	5	7,5	12,2	67	46	1000	2,3	10
021206XB	031206XB	M6	6	9,5	13,7	68	46	1200	2,8	10
021208B	031208B	M8	6	9,5	13,7	79	55	2100	3,9	10
021208XB	031208XB	M8	8	11	16,5	82	55	2200	5,5	10
021210B	031210B	M10	8	11	16,5	90	59	3400	6,9	10
021210XB	031210XB	M10	9,5	12,5	20,2	95	59	3500	7,8	10
021212B	031212B	M12	12	14	25,1	118,8	76	5100	17,0	5
021212XB	031212XB	M12	14	18	32	125,6	76	5100	26,3	5
021214B	031214B	M14	12	14	25,1	129	86	6400	30,1	5
021216XB	031216XB	M16	15,7	17	32,5	150	98	9400	36,9	5
021220B	031220B	M20	19	24	48	191	120	14700	71,9	BULK
021222B	031222B	M22	22	30	57,5	224,5	140	18000	120,1	BULK
021224B	031224B	M24	25,4	30	62	261	170	21000	180,0	BULK
021227B	031227B	M27	28	32	68	279,8	180	23000	215,1	BULK
021230B	031230B	M30	32	35	76,2	310,8	200	28000	301,9	BULK
021236B	031236B	M36	35	40	86,3	343,7	220	41000	451,7	BULK

Note: All break loads are determined by clevis pin and thread



WELDED THREAD FORKS UNF

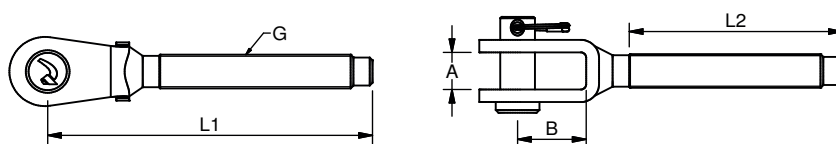
Polished stainless steel - AISI 316



ART. NO. RIGHT	ART. NO. LEFT	G	PIN	A	B	L1	L2	BL/LB	LB/100
021306AB	031306AB	1/4"	1/4"	3/8"	33/64"	2 11/16"	1 27/32"	2866	5
021308AB	031308AB	5/16"	5/16"	7/16"	19/32"	3 3/16"	2 1/4"	4850	9
021310AB	031310AB	3/8"	3/8"	15/32"	3/4"	3 11/16"	2 15/32"	7496	15
021311AB	031311AB	7/16"	7/16"	15/32"	29/32"	4 3/32"	3 5/32"	10141	22
021312AB	031312AB	1/2"	1/2"	9/16"	31/32"	4 11/16"	3 5/32"	13448	37
021316AB	031316AB	5/8"	9/16"	23/32"	1 5/16"	5 15/16"	3 15/16"	21826	78
021316AXB	031316AXB	5/8"	5/8"	23/32"	1 5/16"	5 15/16"	3 15/16"	21826	82
021320AB	031320AB	3/4"	3/4"	15/16"	1 7/8"	7 1/2"	4 11/16"	31747	159
021322AB	031322AB	7/8"	7/8"	1 3/16"	2 7/32"	8 13/16"	5 1/2"	43211	265
021325AB	021325AB	1"	1"	1 3/16"	2 7/16"	10 3/16"	6 11/16"	47179	397

Note: All break loads are determined by clevis pins and thread

The user is responsible for choosing the proper cable diameter and for correct assembly



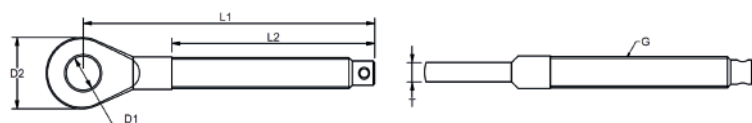
THREAD EYES

Polished stainless steel - AISI 316

ART. NO. RIGHT	ART. NO. LEFT	G	D1	D2	L1	L2	T	BL/LB	LB/100	PACK
023906A	033906A	1/4"	1/4"	9/16"	2 9/16"	1 7/8"	3/16"	2866	3	25
023908A	033908A	5/16"	5/16"	11/16"	3 1/16"	2 1/4"	3/16"	4850	7	25
023910A	033910A	3/8"	7/16"	7/8"	3 1/2"	2 1/2"	1/4"	7496	11	25
023911AX	033911AX	7/16"	7/16"	15/16"	3 7/8"	2 3/4"	5/16"	10141	20	10
023912A	033912A	1/2"	1/2"	1"	4 5/16"	3 1/8"	5/16"	13448	22	10
023912AX	033912AX	1/2"	1/2"	1 1/8"	4 1/8"	3 1/8"	3/8"	13448	26	10
023916A	033916A	5/8"	9/16"	1 1/4"	5 1/4"	3 15/16"	3/8"	21826	45	10
023916AX	033916AX	5/8"	5/8"	1 7/16"	5 9/16"	3 15/16"	1/2"	21826	56	10
023920A	033920A	3/4"	3/4"	1 9/16"	6 7/16"	4 3/4"	5/8"	31747	105	5
023922AX	033922AX	7/8"	7/8"	1 7/8"	7 3/4"	5 1/2"	11/16"	43211	164	BULK
023925AX	033925AX	1"	1"	2 1/16"	9 1/16"	6 11/16"	13/16"	47179	239	BULK
023927AX	033927AX	1 - 1/8"	1 1/8"	2 9/16"	9 3/4"	7 1/16"	1"	60848	291	BULK
023930AX	033930AX	1 - 1/4"	1 1/4"	2 3/4"	10 13/16"	7 7/8"	1 3/16"	76280	414	BULK
023936AX	033936AX	1 - 3/8"	1 3/8"	2 15/16"	11 11/16"	8 11/16"	1 3/16"	93476	551	BULK
023942A	033942A	1 - 5/8"	1 5/8"	2 15/16"	14 7/16"	10 5/8"	1 1/2"	131616	1076	BULK

Note: All break load are determined by thread

The user is responsible for choosing the proper cable diameter and correct assembly



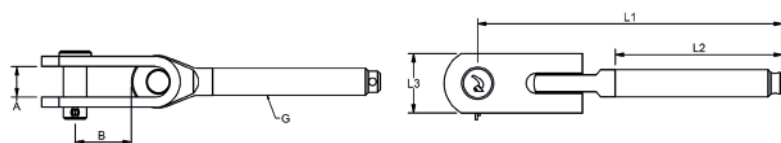
THREAD TOGGLES

Polished stainless steel - AISI 316

ART. NO. RIGHT	ART. NO. LEFT	G	PIN	A	B	L1	L2	L3	BL/LB	LB/100
023306AB	033306AB	1/4"	1/4"	5/16"	21/32"	3 15/32"	1 27/32"	9/16"	2866	10
023308AB	033308AB	5/16"	5/16"	13/32"	25/32"	4 1/8"	2 1/4"	23/32"	4850	18
023310AB	033310AB	3/8"	3/8"	15/32"	1 1/32"	4 31/32"	2 15/32"	7/8"	7496	35
023311AXB	033311AXB	7/16"	7/16"	19/32"	1 1/8"	5 19/32"	2 3/4"	1 3/16"	10141	56
023312AXB	033312AXB	1/2"	1/2"	23/32"	1 3/8"	5 25/32"	3 5/32"	1 3/16"	13448	69
023316AXB	033316AXB	5/8"	5/8"	25/32"	1 5/8"	7 13/16"	3 15/16"	1 3/8"	21826	139
023320AXB	033320AXB	3/4"	3/4"	15/16"	1 25/32"	8 7/8"	4 23/32"	1 9/16"	31747	243
023322AXB	033322AXB	7/8"	7/8"	1 1/32"	1 15/16"	10 1/2"	5 1/2"	1 31/32"	43211	366
023325AXB	033325AXB	1"	1"	1 5/32"	2 5/16"	12 1/4"	6 11/16"	2 3/8"	47179	611
023327AXB	033327AXB	1 - 1/8"	1 1/8"	1 11/32"	2 3/8"	13 1/2"	7 1/16"	2 3/8"	60848	800
023330AXB	033330AXB	1 - 1/4"	1 1/4"	1 9/16"	2 23/32"	14 15/16"	7 7/8"	2 15/16"	76280	1182
023336AXB	033336AXB	1 - 3/8"	1 3/8"	1 23/32"	3 1/32"	16 5/16"	8 11/16"	2 15/16"	93476	1424
023342AB	033342AB	1 - 5/8"	1 9/16"	1 7/8"	3 29/32"	20 1/16"	10 5/8"	3 3/4"	131616	2194

Note: All break loads are determined by clevis pin and thread

The user is responsible for choosing the proper cable diameter and for correct assembly

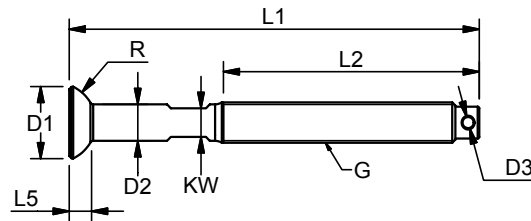




THREADED STEMBALLS

Polished stainless steel - AISI 316

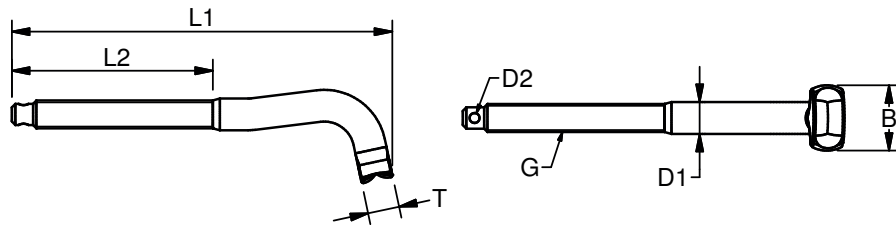
ART. NO. LEFT	G	D1	D2	D3	L1	L2	L5	KW	R	BL/LB	LB/100	PACK
BT014000A	1/4"	33/64"	1/4"	3/32"	3 5/32"	1 31/32"	3/16"	3/16"	15/64"	2866	9	BULK
BT516000A	5/16"	3/4"	11/32"	1/8"	3 5/8"	2 1/4"	9/32"	9/32"	9/32"	4850	9	BULK
BT038000A	3/8"	3/4"	3/8"	1/8"	3 31/32"	2 15/32"	15/64"	9/32"	9/32"	7496	12	BULK
BT716000A	7/16"	25/32"	7/16"	1/8"	4 3/8"	2 3/4"	15/64"	11/32"	9/32"	10141	18	BULK
BT012000A	1/2"	25/32"	1/2"	1/8"	5 3/32"	3 5/32"	15/64"	11/32"	9/32"	13448	27	BULK
BT058000A	5/8"	31/32"	5/8"	3/16"	6 1/16"	3 15/16"	11/32"	15/32"	13/32"	21826	52	BULK
BT034000A	3/4"	1 1/8"	3/4"	3/16"	7"	4 23/32"	13/32"	19/32"	9/16"	31747	85	BULK
BT078000A	7/8"	1 5/16"	27/32"	7/32"	8 3/8"	5 1/2"	1/2"	3/4"	21/32"	43200	146	BULK



THREADED T

Polished stainless steel - AISI 316

ART. NO. LEFT	LEFT G	B	T	D1	D2	L1	L2	BL/LB	LB/100	PACK
036106A	1/4"	19/32"	1/4"	1/4"	3/32"	3 5/16"	1 7/8"	2866	5	20
036108A	5/16"	23/32"	11/32"	11/32"	1/8"	4 1/4"	2 1/4"	4850	12	20
036110A	3/8"	1 3/32"	1/2"	1/2"	1/8"	5 5/32"	2 15/32"	7496	27	20
036111A	7/16"	1 3/32"	1/2"	1/2"	1/8"	5 5/32"	2 11/16"	10141	30	10
036112A	1/2"	1 5/32"	9/16"	9/16"	1/8"	5 19/32"	3 5/32"	13448	41	10
036116A	5/8"	1 13/32"	11/16"	11/16"	3/16"	7 5/8"	3 31/32"	21826	88	10

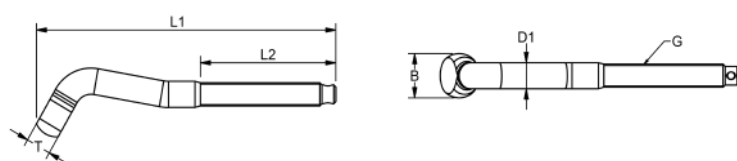


THREADED SHROUD

Polished stainless steel - AISI 316

ART. NO.	LH G	D1	B	T	L1	L2	BL/KG	KG/100	PACK	Fits back plates:	
										BW	
SH036106A	1/4"	6,35	13,5	6,35	95	48	1300	2,8	20		616103
SH036108A	5/16"	9	18,4	9	114	57	2200	6,1	20		616105
SH036110A	3/8"	12,58	21,5	12,58	160	63	3400	15,1	20		SH6106
SH036111A	7/16"	12,58	21,5	12,58	165	68	4600	16,8	20		SH6106
SH036112A	1/2"	14,2	28	14,2	162	80	6100	22,6	20		SH6107
SH036116A	5/8"	16	29	16	189	100	8000	34,9	10		SH6107
SH036116AX	5/8"	17,8	32	17,8	197	100	9900	42,6	10		SH6110
SH036120A	3/4"	21,4	38	21,4	277	120	14400	82,7	10		SH6112

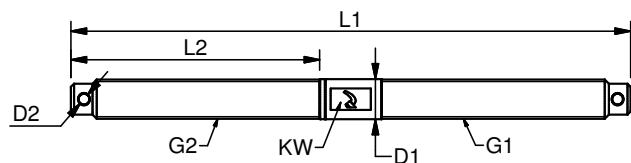
The user is responsible for choosing the proper cable diameter and for correct assembly



DOUBLE THREADED PINS

Polished stainless steel - AISI 316

ART. NO.	G1	G2	D1	D2	KW	L1	L2	BL/LB	LB/100	PACK
930306AHV	1/4"	1/4" LH	9/32"	3/32"	3/16"	4 1/4"	1 7/8"	2866	4,9	10
930408AHV	5/16"	5/16" LH	5/16"	1/8"	15/64"	5 1/8"	2 1/4"	4850	11	10
930610AHV	3/8"	3/8" LH	13/32"	1/8"	5/16"	5 21/32"	2 15/32"	7496	17	10
930711AHV	7/16"	7/16" LH	15/16"	9/64"	25/64"	6 3/16"	2 5/8"	10141	26	10
930812AHV	1/2"	1/2" LH	33/64"	1/8"	7/16"	7 1/8"	3 5/32"	13448	39	10
931016AHV	5/8"	5/8" LH	21/32"	3/16"	19/32"	8 3/4"	3 15/16"	21826	76	10
931220AHV	3/4"	3/4" LH	55/64"	3/16"	21/32"	10 7/16"	4 23/32"	31746	132,5	5



SWAGE FITTINGS

Swage wire end fittings in polished stainless steel. Marked with wire size and swage depth marking for faster and easier swaging. Standard swage will produce a swage within given tolerances in one pass. Two passes in the same track can be done when extremely compact strand ropes are used. Additional passes should not be made.

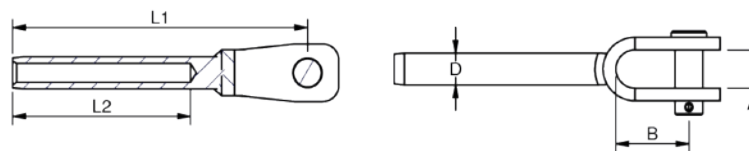


WELDED SWAGE FORK

Polished stainless steel - AISI 316

ART. NO.	WIRE	PIN	A	B	D	L1	L2	BL/LB	LB/100	PACK	
100502	2	-	3/16"	19/64"	15/32"	7/32"	2 9/32"	1 1/4"	1764	4	25
100525	2.5	-	3/16"	19/64"	15/32"	7/32"	2 9/32"	1 1/4"	1764	4	25
100503	3	-	3/16"	19/64"	15/32"	1/4"	2 5/8"	1 1/2"	1764	5	25
100532	-	1/8"	3/16"	19/64"	15/32"	1/4"	2 5/8"	1 1/2"	1764	5	25
100603	3	-	15/64"	3/8"	33/64"	1/4"	2 11/16"	1 1/2"	2866	6	25
100632	-	1/8"	15/64"	3/8"	33/64"	1/4"	2 11/16"	1 1/2"	2866	6	25
106303	3	-	1/4"	3/8"	33/64"	1/4"	2 11/16"	1 1/2"	2866	6	25
106332	-	1/8"	1/4"	3/8"	33/64"	1/4"	2 11/16"	1 1/2"	2866	6	25
100504	4	5/32"	3/16"	19/64"	15/32"	19/64"	2 25/32"	1 25/32"	1764	6	25
100604	4	5/32"	15/64"	3/8"	33/64"	19/64"	2 7/8"	1 25/32"	3307	7	25
100804	4	5/32"	5/16"	7/16"	19/32"	19/64"	3 1/32"	1 25/32"	3748	11	25
100605	5	3/16"	15/64"	3/8"	33/64"	11/32"	3 9/32"	2"	3307	9	25
100805	5	3/16"	5/16"	7/16"	19/32"	11/32"	3 7/16"	2"	5291	12	10
109505	5	3/16"	3/8"	15/32"	3/4"	11/32"	3 19/32"	2"	5291	16	10
109555	-	7/32"	3/8"	15/32"	13/16"	27/64"	3 3/4"	2 5/16"	7700	22	10
100806	6	-	5/16"	7/16"	19/32"	1/2"	3 29/32"	2 17/32"	7055	22	10
109506	6	-	3/8"	15/32"	3/4"	1/2"	4 3/32"	2 17/32"	8378	25	10
101106	6	-	7/16"	33/64"	29/32"	1/2"	4 1/4"	2 17/32"	11023	31	10
101163	-	1/4"	7/16"	33/64"	29/32"	1/2"	4 1/4"	2 17/32"	10582	31	10
101206	6	-	15/32"	9/16"	1"	1/2"	4 11/32"	2 17/32"	11464	39	10
101207	7	9/32"	15/32"	9/16"	1"	9/16"	4 11/16"	2 3/4"	14330	40	10
101363	-	1/4"	1/2"	9/16"	1"	1/2"	4 5/16"	2 1/2"	11464	40	10
101307	7	9/32"	1/2"	9/16"	1"	9/16"	4 11/16"	2 3/4"	14330	40	10
101208	8	5/16"	15/32"	9/16"	1"	5/8"	5 11/32"	3 9/32"	14330	48	10
101308	8	5/16"	1/2"	9/16"	1"	5/8"	5 11/32"	3 9/32"	14330	48	10
101608	8	5/16"	5/8"	23/32"	1 5/16"	5/8"	5 23/32"	3 9/32"	18739	56	10
101495	-	3/8"	9/16"	23/32"	1 3/16"	11/16"	5 15/16"	3 1/2"	22487	77	10
101410	10	-	9/16"	23/32"	1 1/4"	11/16"	5 15/16"	3 1/2"	20723	77	10
101410L	10	-	9/16"	7/8"	1 3/16"	11/16"	5 7/8"	3 1/2"	20723	77	10
101610	10	-	5/8"	23/32"	1 5/16"	11/16"	5 15/16"	3 1/2"	20723	77	10
101910	10	-	3/4"	15/16"	1 1/8"	11/16"	6 5/8"	3 1/2"	20723	134	10
* 101612	12	-	5/8"	23/32"	1 5/16"	25/32"	6 27/32"	4 1/8"	24692	132	10
* 101612L	12	-	5/8"	7/8"	1 7/32"	25/32"	6 23/32"	4 1/8"	24692	132	5
* 101912	12	-	3/4"	15/16"	1 7/8"	25/32"	7 7/16"	4 1/8"	24692	146	5
* 101912L	12	-	3/4"	1 3/16"	1 27/32"	25/32"	7 3/8"	4 1/8"	24692	146	5
101912X	12	-	3/4"	15/16"	1 7/8"	27/32"	8 1/16"	4 23/32"	30865	165	5
101913	-	1/2"	3/4"	15/16"	1 7/8"	27/32"	8 1/16"	4 23/32"	28440	165	5
101914L	14	-	3/4"	1 3/16"	1 27/32"	31/32"	8 11/16"	5 1/2"	33069	165	5
102214	14	-	7/8"	1 3/16"	2 1/4"	31/32"	9 1/8"	5 1/2"	33069	248	5
102514	14	-	1"	1 3/16"	2 7/16"	31/32"	9 1/4"	5 1/2"	33069	276	5
102516	16	5/8"	1"	1 3/16"	2 7/16"	1 1/8"	10 13/32"	6 5/16"	41888	309	5
102819	19	3/4"	1 1/8"	1 1/4"	2 11/16"	1 11/32"	15 5/32"	7 7/8"	59525	542	BULK

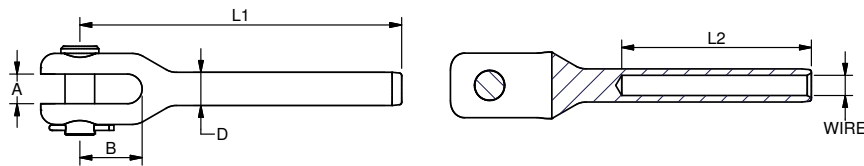
*Swage fork OD. = 20 mm/E-die



SWAGE FORK - MACHINED

ART. NO.	WIRE	PIN	A	B	D	L1	L2	BL/LB	LB/100	PACK	
721912	12	-	3/4"	25/32"	1 25/32"	25/32"	7 3/4"	4 1/8"	20944	220	BULK
721912X	12	-	3/4"	15/16"	1 25/32"	27/32"	7 3/4"	4 1/8"	31306	243	BULK
722214	14	-	7/8"	7/8"	1 15/16"	31/32"	9 7/16"	5 1/2"	33069	375	BULK
722516	16	5/8"	1"	31/32"	2 1/16"	1 1/8"	10 11/16"	6 5/16"	41888	463	BULK
722819	19	3/4"	1 1/8"	1 3/16"	2 5/32"	1 11/32"	12 7/8"	7 7/8"	59525	728	BULK
723222	22	7/8"	1 1/4"	1 3/8"	2 5/8"	1 19/32"	14 13/16"	9 1/16"	77162	1058	BULK
723526	26	1"	1 3/8"	1 3/8"	2 5/8"	1 13/16"	17 1/16"	11 1/32"	105822	1543	BULK

Note: All break loads are determined by clevis pin

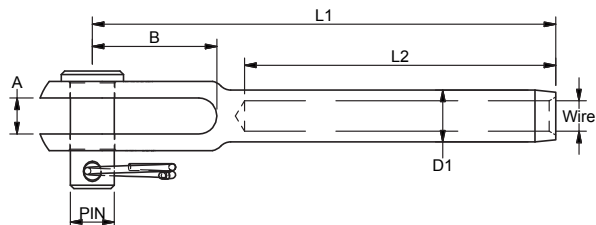


SWAGE AIRCRAFT FORK - ACCORDING TO MS20667

Polished stainless steel - AISI 316

ART. NO.	WIRE	PIN	D1	L1	L2	A	B	BL/LB	LB/100	PACK	
* ACF4516	-	1/16"	3/16"	5/32"	1 37/64"	-	3/32"	1/2"	1323	1.5	10
* ACF4502	2	-	3/16"	7/32"	1 15/16"	-	7/64"	43/64"	2624	2.6	10
* ACF4525	2.5	-	3/16"	7/32"	1 15/16"	-	7/64"	43/64"	2315	2.6	10
* ACF4503	3	-	3/16"	1/4"	2 23/64"	-	13/64"	47/64"	3042	4	10
* ACF4532	-	1/8"	3/16"	1/4"	2 23/64"	-	13/64"	47/64"	2910	3.7	10
* ACF0604	4	5/32"	1/4"	19/64"	2 21/32"	-	13/64"	51/64"	3814	5.5	10
* ACF0805	5	3/16"	5/16"	23/64"	3 5/64"	-	1/4"	7/8"	5494	9.9	10
* ACF0855	-	7/32"	5/16"	27/64"	3 7/16"	-	5/16"	31/32"	8598	15	10
* ACF9506	6	-	-	1/2"	3 13/16"	-	5/16"	1 1/16"	12037	24	10
* ACF95635	-	1/4"	3/8"	1/2"	3 13/16"	-	5/16"	1 1/16"	11618	23	10
* ACF1107	7	9/32"	7/16"	9/6"	4 1/8"	-	21/64"	1 11/64"	15080	33	10
* ACF1108	8	5/16"	7/16"	41/64"	4 7/16"	-	11/32"	1 17/64"	19070	43	10
ACF1395	-	3/8"	1/2"	45/64"	5 21/64"	3 33/64"	3/8"	1 17/32"	22487	61	10
ACF1410	10	-	-	25/32"	6 13/32"	4 1/64"	3/8"	1 25/32"	30086	99	5
ACF1411	-	7/16"	9/16"	25/32"	6 13/32"	4 1/64"	3/8"	1 25/32"	27778	95	5
ACF1612	12	-	-	27/32"	6 15/16"	4 45/64"	15/32"	1 29/32"	31328	112	5
ACF1613	-	1/2"	5/8"	27/32"	6 15/16"	4 45/64"	15/32"	1 29/32"	28616	107	5

*Wirehole drilled through



SWAGE EYE

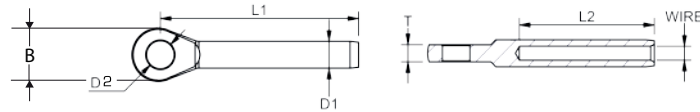
Polished stainless steel - AISI 316



ART. NO.	WIRE	B	D1	D2	L1	L2	T	BL/LB	LB/100	PACK	
190002	2	-	15/32"	7/32"	7/32"	1 5/8"	15/16"	1/8"	2646	2	100
190025	2.5	-	15/32"	7/32"	7/32"	1 23/32"	1 1/16"	1/8"	2205	2	100
190003	3	-	9/16"	1/4"	1/4"	2 3/8"	1 1/2"	5/32"	2866	3	100
190332	-	1/8"	9/16"	1/4"	1/4"	2 3/8"	1 1/2"	5/32"	2866	3	100
190004	4	5/32"	21/32"	19/64"	11/32"	2 5/8"	1 25/32"	3/16"	3748	5	100
190005	5	3/16"	13/16"	11/32"	13/32"	3 1/8"	2"	15/64"	5291	9	25
190055	-	7/32"	13/16"	7/16"	13/32"	3 11/32"	2 5/16"	15/64"	7937	13	25
190006	6	-	31/32"	1/2"	33/64"	3 11/16"	2 17/32"	5/16"	12125	19	10
190006X	6	-	1 1/8"	1/2"	17/32"	4 1/8"	2 17/32"	13/32"	12125	29	10
190063	-	1/4"	31/32"	1/2"	33/64"	3 3/4"	2 17/32"	5/16"	11464	19	10
190063X	-	1/4"	1 1/8"	1/2"	17/32"	4 1/8"	2 17/32"	13/32"	11464	24	10
190007	7	9/32"	1 1/16"	9/16"	33/64"	4 3/32"	2 3/4"	11/32"	14991	25	10
190007X	7	9/32"	1 1/8"	9/16"	17/32"	4 11/32"	2 3/4"	13/32"	14991	30	10
190008	8	5/16"	1 3/16"	5/8"	9/16"	4 7/8"	3 9/32"	13/32"	17637	37	10
190008X	8	5/16"	1 3/8"	5/8"	21/32"	5 9/16"	3 9/32"	15/32"	19180	52	10
190095	-	3/8"	1 3/8"	11/16"	21/32"	5 13/32"	3 1/2"	7/16"	22487	56	10
190095X	-	3/8"	1 9/16"	11/16"	25/32"	6 1/2"	3 15/16"	5/8"	22487	84	10
190010	10	-	1 3/8"	11/16"	21/32"	5 13/32"	3 1/2"	7/16"	21385	55	10
190010BW	10	-	1 9/16"	11/16"	21/32"	6 1/2"	3 15/16"	5/8"	21385	84	10
190010X	10	-	1 9/16"	11/16"	25/32"	6 1/2"	3 15/16"	5/8"	21385	84	10
190012	12	-	1 9/16"	25/32"	3/4"	6 1/8"	4 1/8"	19/32"	25133	91	5
190012X	12	-	1 5/8"	27/32"	3/4"	7"	4 23/32"	19/32"	31306	90	5
190013	-	1/2"	1 5/8"	27/32"	3/4"	7"	4 23/32"	19/32"	29321	90	5
190014	14	-	1 27/32"	31/32"	29/32"	8 1/8"	5 1/2"	23/32"	35053	167	5
190016	16	5/8"	2 3/32"	1 1/8"	1 1/32"	9 1/8"	6 5/16"	25/32"	41888	225	5
190019	19	3/4"	2 9/16"	1 11/32"	1 1/8"	11 7/8"	7 7/8"	31/32"	68343	461	BULK
190022	22	7/8"	2 3/4"	1 19/32"	1 5/16"	13 11/16"	9 1/16"	1 3/16"	92594	692	BULK
190026	26	1"	3 5/32"	1 13/16"	1 3/8"	15 3/4"	11 1/32"	1 3/16"	116845	937	BULK
190028	28	1 1/8"	3 5/16"	1 31/32"	1 19/32"	17 5/16"	11 13/16"	1 1/2"	141096	1327	BULK

The user is responsible for choosing the proper cable diameter and for correct assembly

Note: Swage eye OD. = 20 mm/E-die

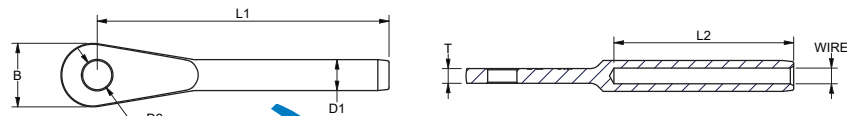


SWAGE AIRCRAFT EYE

Polished stainless steel - AISI 316



ART. NO.	WIRE	B	D1	D2	L1	L2	T	BL/KG	KG/100	PACK	MS STYLE	
ACE4516	-	1/16"	9,1	4	5,2	41	26	2,2	400	0,4	10	20668-2
ACE4502	2	-	11,1	5,5	5,2	52	32	2,6	800	0,9	10	-
ACE4525	2,5	3/32"	11,1	5,5	5,2	52	32	2,6	800	0,9	10	20668-3
ACE4503	3	-	12,7	6,35	5,2	59,4	38	4,8	1380	1,6	10	-
ACE4532	-	1/8"	12,7	6,35	5,2	59,4	38	4,8	1320	1,6	10	20668-4
ACE0604	4	5/32"	16,3	7,5	6,5	68,2	45	5	1730	2,4	10	20668-5
ACE0805	5	3/16"	19,8	9	8	76,7	51	6,5	2400	4	10	20668-6
ACE0855	-	7/32"	20,7	10,8	8,2	85,9	57	7,4	3600	6,3	10	20668-7
ACE9506	6	-	24,6	12,58	10,5	95,6	64	7,8	5460	9,2	10	-
ACE95635	-	1/4"	24,6	12,58	10,5	95,6	64	7,8	5270	9,1	10	20668-8
ACE1107	7	9/32"	28,2	14,2	11,4	105,5	70	8,2	6840	12,7	10	20668-9
ACE1108	8	5/16"	30,9	16	11,4	115,5	76	8,7	8650	17,2	10	20668-10
ACE1395	-	3/8"	38,1	17,8	13	141,3	89	9,5	10200	26,7	10	20668-12
ACE1410	10	-	44,5	20	14,5	162,5	102	9,5	13647	38,3	5	-
ACE1411	-	7/16"	44,5	20	14,5	162,5	102	9,5	12600	36,9	5	20668-14
ACE1612	12	-	47,6	21,4	16,5	186	120	11,9	14210	50,7	5	-
ACE1613	-	1/2"	47,6	21,4	16,5	186	120	11,9	12980	48,7	5	20668-16



SWAGE TOGGLE

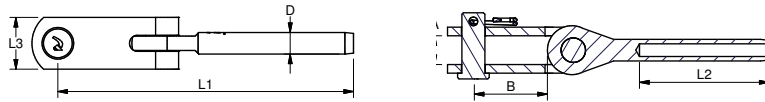
Polished stainless steel - AISI 316

ART. NO.	WIRE	PIN	A	B	D	L1	L2	L3	BL/LB	LB/100	PACK	
500503G	3	-	3/16"	9/32"	7/16"	1/4"	3 1/16"	1 1/2"	15/32"	2205	7	10
500532G	-	1/8"	3/16"	9/32"	7/16"	1/4"	3 1/16"	1 1/2"	15/32"	2205	7	10
500504G	4	5/32"	3/16"	9/32"	7/16"	19/64"	3 11/32"	1 25/32"	15/32"	2205	8	10
506304G	4	5/32"	1/4"	13/32"	9/16"	19/64"	3 19/32"	1 25/32"	15/32"	2866	11	10
506305G	5	3/16"	1/4"	13/32"	9/16"	11/32"	3 29/32"	2"	15/32"	2866	13	10
* 506306G	6	-	1/4"	13/32"	9/16"	11/32"	3 11/32"	1 9/16"	15/32"	2866	15	10
500603	3	-	1/4"	13/32"	21/32"	1/4"	3 3/16"	1 1/2"	9/16"	2866	9	10
500632	-	1/8"	1/4"	13/32"	21/32"	1/4"	3 3/16"	1 1/2"	9/16"	2866	9	10
500804	4	5/32"	5/16"	7/16"	31/32"	19/64"	3 11/16"	1 25/32"	23/32"	3748	16	10
509505	5	3/16"	3/8"	33/64"	1 1/16"	11/32"	4 9/16"	2"	29/32"	5291	30	10
509555	-	7/32"	3/8"	33/64"	1 1/16"	7/16"	4 7/8"	2 5/16"	29/32"	8598	35	10
501106X	6	-	7/16"	19/32"	1 5/32"	1/2"	5 5/16"	2 17/32"	1 3/16"	10362	60	10
501163X	-	1/4"	7/16"	19/32"	1 5/32"	1/2"	5 23/32"	2 17/32"	1 3/16"	10362	60	10
501206X	6	-	1/2"	23/32"	1 5/16"	1/2"	5 15/16"	2 17/32"	1 3/16"	11905	74	5
501263X	-	1/4"	1/2"	23/32"	1 5/16"	1/2"	5 15/16"	2 17/32"	1 3/16"	11464	73	5
501207X	7	9/32"	1/2"	23/32"	1 5/16"	9/16"	6 3/16"	2 3/4"	1 3/16"	14330	79	5
501308	8	5/16"	1/2"	23/32"	1 5/16"	5/8"	6 11/16"	3 9/32"	1 3/16"	14330	83	5
501608X	8	5/16"	5/8"	25/32"	1 5/8"	5/8"	7 13/16"	3 9/32"	1 3/8"	18739	132	5
501610	10	-	5/8"	25/32"	1 5/8"	11/16"	7 9/16"	3 1/2"	1 3/8"	21164	142	5
501695	-	3/8"	5/8"	23/32"	1 5/8"	11/16"	6 15/16"	3 1/2"	1 3/8"	22487	135	5
501995X	-	3/8"	3/4"	15/16"	1 11/16"	11/16"	9"	3 15/16"	1 9/16"	22487	221	BULK
501910X	10	-	3/4"	15/16"	1 11/16"	11/16"	9"	3 15/16"	1 9/16"	21164	220	BULK
501912X	12	-	3/4"	15/16"	1 11/16"	27/32"	9 7/16"	4 23/32"	1 9/16"	31306	227	BULK
501913	-	1/2"	3/4"	15/16"	1 11/16"	27/32"	9 7/16"	4 23/32"	1 9/16"	28440	227	BULK
502214	14	-	7/8"	1 1/32"	1 27/32"	31/32"	10 7/8"	5 1/2"	1 31/32"	35274	375	BULK
502516	16	5/8"	1"	1 5/32"	2 3/8"	1 1/8"	12 5/16"	6 5/16"	2 3/8"	42770	585	BULK
502819	19	3/4"	1 1/8"	1 11/32"	2 15/32"	1 11/32"	15 11/16"	7 7/8"	2 3/8"	59525	1129	BULK
503222	22	7/8"	1 1/4"	1 9/16"	2 7/8"	1 19/32"	18 1/4"	9 1/16"	2 15/16"	74957	1257	BULK
503526	26	1"	1 3/8"	1 23/32"	3 5/32"	1 13/16"	20 3/8"	11 1/32"	3 11/32"	99208	1653	BULK
504028	28	-	1 9/16"	1 7/8"	3 15/16"	1 31/32"	23 1/8"	11 13/16"	3 3/4"	141096	2445	BULK

Note: All break loads are determined by clevis pin

The user is responsible for choosing the proper cable diameter and for correct assembly

*Use E-die for 5 mm/3/16" wire

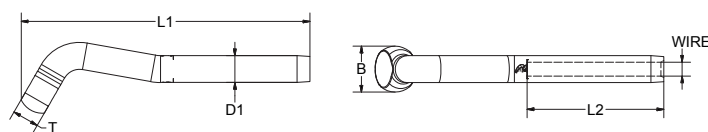


SWAGE SHROUD

Polished stainless steel - AISI 316

ART. NO.	WIRE	D1	B	T	L1	L2	LB/100	PACK	Fits backing plates:		
									BW	Navtec	
SH610003	3	-	1/4"	17/32"	1/4"	3 3/32"	1 1/2"	5	20	616103	-
SH610032	-	1/8"	1/4"	17/32"	1/4"	3 3/32"	1 1/2"	5	20	616103	-
SH610004	4	5/32"	19/64"	19/32"	19/64"	3 19/32"	1 25/32"	7	20	616105	-
SH610005	5	3/16"	11/32"	23/32"	11/32"	4 5/32"	2"	11	20	616105	-
SH610006	6	-	1/2"	27/32"	1/2"	5 15/16"	2 17/32"	33	20	SH6106	N841-M06
SH610007	7	9/32"	9/16"	1 1/32"	9/16"	5 15/16"	2 3/4"	43	20	SH6107	N841-M07
SH610008	8	5/16"	5/8"	1 3/16"	5/8"	6 9/16"	3 9/32"	61	10	SH6108	N841-M08
SH610095	3/8"	11/16"	1 1/4"	11/16"	7 3/8"	3 1/2"	84	10	SH6110	N841-M10	
SH610010	10	-	11/16"	1 1/4"	11/16"	7 3/8"	3 1/2"	84	10	SH6110	N841-M10
SH610012	12	-	27/32"	1 1/2"	27/32"	10"	4 1/8"	157	10	SH6112	N841-M12
SH610013	-	1/2"	27/32"	1 1/2"	27/32"	10 7/8"	4 3/4"	160	10	SH6112	N841-M12

The user is responsible for choosing the proper cable diameter and for correct assembly



The Blue Wave swage shroud all feature engraved wire size, Blue Wave logo and swage depth marking for faster and easier swaging.





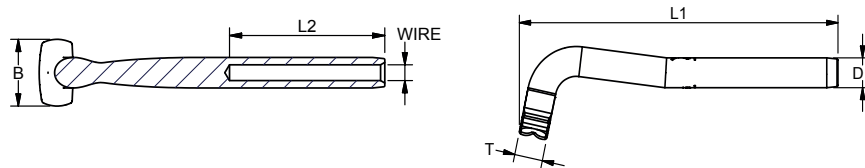
"S" model with long neck

SWAGE T

Polished stainless steel - AISI 316

ART. NO.	WIRE	D1	B	T	L1	L2	LB/100	PACK
610002	2 -	7/32"	19/32"	1/4"	2 15/16"	15/16"	3	20
610025	2.5 -	7/32"	19/32"	1/4"	3 1/32"	1 1/16"	3	20
610003	3 -	1/4"	19/32"	1/4"	3 15/32"	1 1/2"	4	20
610032	- 1/8"	1/4"	19/32"	1/4"	3 15/32"	1 1/2"	4	100
610004	4 5/32"	19/64"	21/32"	19/64"	3 31/32"	1 25/32"	9	20
610005	5 3/16"	11/32"	23/32"	11/32"	4 13/32"	2"	14	20
610055	- 7/32"	7/16"	1 3/32"	1/2"	5 1/8"	2 5/16"	27	20
610006	6 -	1/2"	1 3/32"	1/2"	5 7/16"	2 17/32"	33	20
610006S	6 -	1/2"	1 3/32"	1/2"	5 3/16"	2 17/32"	33	20
610063	- 1/4"	1/2"	1 3/32"	1/2"	5 7/16"	2 17/32"	33	10
610007	7 9/32"	9/16"	1 5/32"	9/16"	5 21/32"	2 3/4"	37	10
610007S	7 -	9/16"	1 3/16"	9/16"	5 15/32"	2 3/4"	37	10
610008	8 5/16"	5/8"	1 11/32"	5/8"	7 1/4"	3 9/32"	69	10
610008S	8 -	5/8"	1 5/16"	5/8"	6 23/32"	3 9/32"	69	10
610095	- 3/8"	11/16"	1 3/8"	11/16"	8 7/16"	3 1/2"	97	10
610010	10 -	11/16"	1 3/8"	11/16"	8 7/16"	3 1/2"	96	10

The user is responsible for choosing the proper cable diameter and for correct assembly



LONG THREADED STUDS

Polished stainless steel - AISI 316

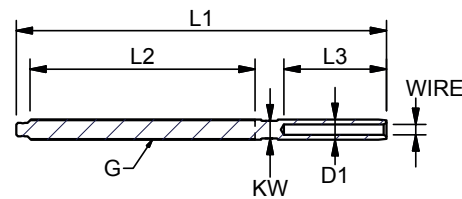


Fits MRT and MST turnbuckles

ART. NO.	WIRE	G	D1	L1	L2	L3	KW	BL/LB	LB/100	PACK
05M0306A	3 -	1/4"	1/4"	5 3/16"	3 3/8"	1 1/2"	3/16"	2866	6	BULK
05M0406A	4 5/32"	1/4"	19/64"	5 13/32"	3 3/16"	1 25/32"	15/64"	2866	7	BULK
05M0408A	4 5/32"	1/4"	19/64"	5 25/32"	3 21/32"	1 25/32"	15/64"	3748	9	BULK
05M0508A	5 3/16"	5/16"	11/32"	6 1/8"	3 21/32"	2"	9/32"	4850	11	BULK
05M0510A	5 3/16"	5/16"	11/32"	6 15/16"	4 17/32"	2"	9/32"	5291	17	BULK
05M6310A	- 1/4"	3/8"	1/2"	7 3/4"	4 17/32"	2 17/32"	7/16"	7495	28	BULK
05M0611A	6 -	3/8"	1/2"	8 1/8"	4 27/32"	2 17/32"	7/16"	10141	32	BULK
05M0711A	7 9/32"	3/8"	9/16"	8 5/16"	4 27/32"	2 3/4"	15/32"	10141	37	BULK
05M0612A	6 -	3/8"	1/2"	8 13/16"	5 7/8"	2 17/32"	7/16"	11905	41	BULK
05M6312A	- 1/4"	3/8"	1/2"	8 13/16"	5 7/8"	2 17/32"	7/16"	11684	41	BULK
05M0712A	7 9/32"	7/16"	9/16"	9 1/8"	5 7/8"	2 3/4"	15/32"	13448	47	BULK
05M0812A	8 5/16"	7/16"	5/8"	9 3/4"	5 7/8"	3 5/16"	9/16"	13448	56	BULK
05M0816A	8 5/16"	7/16"	5/8"	11 1/8"	7 1/4"	3 5/16"	9/16"	19180	82	BULK
05M1016A	10 -	7/16"	11/16"	11 1/2"	7 1/16"	3 1/2"	19/32"	21385	92	BULK
05M9516A	- 3/8"	5/8"	11/16"	11 3/4"	7 1/16"	3 1/2"	19/32"	21825	99	BULK
05M9520A	- 3/8"	3/4"	11/16"	13 9/32"	8 7/8"	3 1/2"	19/32"	22487	146	BULK
05M1220A	12 -	1/2"	27/32"	14 1/2"	8 7/8"	4 23/32"	3/4"	31306	159	BULK
05M1422A	14 -	1/2"	31/32"	16 5/16"	10 1/16"	5 1/2"	7/8"	35053	247	BULK
05M1625A	16 5/8"	1/2"	1 1/8"	18 7/8"	11 9/16"	6 5/16"	31/32"	42770	362	BULK

Note: All break loads are determined by thread

The user is responsible for choosing the proper cable diameter for correct assembly





THREAD STUDS UNF

Stainless steel - AISI 316

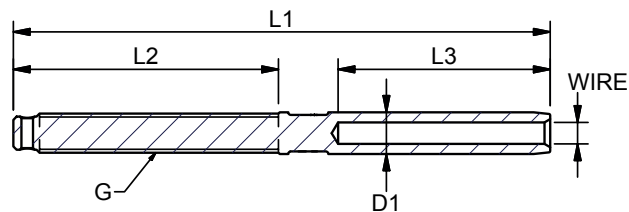


ART. NO. RIGHT	ART. NO. LEFT	WIRE	G	D1	L1	L2	L3	BL/LB	LB/100	PACK	
930306A	940306A	3	-	1/4"	1/4"	3 15/16"	1 7/8"	1 1/2"	2866	5	BULK
933206A	943206A	-	1/8"	1/4"	1/4"	3 15/16"	1 7/8"	1 1/2"	2866	5	BULK
930406A	940406A	4	5/32"	1/4"	19/64"	4 11/32"	1 7/8"	1 25/32"	2866	6	BULK
930408A	940408A	4	5/32"	5/16"	19/64"	4 19/32"	2 1/4"	1 25/32"	3748	8	BULK
930508A	940508A	5	3/16"	5/16"	11/32"	4 27/32"	2 1/4"	2"	4850	9	BULK
930510A	940510A	5	3/16"	3/8"	11/32"	5 1/8"	2 15/32"	2"	5291	12	BULK
935510A	945510A	-	7/32"	3/8"	27/64"	5 7/16"	2 15/32"	2 5/16"	7495	17	BULK
930610A	940610A	6	-	3/8"	1/2"	5 23/32"	2 15/32"	2 17/32"	7495	19	BULK
936310A	946310A	-	1/4"	3/8"	1/2"	5 23/32"	2 15/32"	2 17/32"	7495	18	BULK
935511A	945511A	-	7/32"	7/16"	27/64"	5 3/4"	2 11/16"	2 5/16"	8377	21	BULK
930611A	940611A	6	-	7/16"	1/2"	6 3/16"	2 11/16"	2 17/32"	10141	22	BULK
936311A	946311A	-	1/4"	7/16"	1/2"	6 3/16"	2 11/16"	2 17/32"	10141	25	BULK
930711A	940711A	7	9/32"	7/16"	9/16"	6 3/8"	2 11/16"	2 3/4"	10141	28	BULK
930612A	940612A	6	-	1/2"	1/2"	6 3/8"	3 5/32"	2 17/32"	11905	24	BULK
936312A	946312A	-	1/4"	1/2"	1/2"	6 3/8"	3 5/32"	2 17/32"	11464	24	BULK
930712A	940712A	7	9/32"	1/2"	9/16"	6 11/16"	3 5/32"	2 3/4"	13448	31	BULK
930812A	940812A	8	5/16"	1/2"	5/8"	7 5/16"	3 5/32"	3 9/32"	13448	42	BULK
930816A	940816A	8	5/16"	5/8"	5/8"	8"	3 15/16"	3 9/32"	19180	57	BULK
939516A	949516A	-	3/8"	5/8"	11/16"	8 1/4"	3 15/16"	3 1/2"	19180	69	BULK
931016A	941016A	10	-	5/8"	11/16"	8 3/8"	3 15/16"	3 1/2"	21385	66	BULK
939520A	949520A	-	3/8"	3/4"	11/16"	9 1/16"	4 23/32"	3 1/2"	22487	85	BULK
931020A	941020A	10	-	3/4"	11/16"	9 1/16"	4 23/32"	3 1/2"	21385	85	BULK
* 931220A	941220A	12	-	3/4"	25/32"	9 13/16"	4 23/32"	4 1/8"	25133	106	BULK
931220AX	941220AX	12	-	3/4"	27/32"	10 7/16"	4 23/32"	4 23/32"	31306	107	BULK
931320A	941320A	-	1/2"	3/4"	27/32"	10 1/2"	4 23/32"	4 23/32"	28440	107	BULK
931422A	941422A	14	-	7/8"	31/32"	12 1/8"	5 1/2"	5 1/2"	35053	174	BULK
931625A	941625A	16	5/8"	1"	1 1/8"	14 5/16"	6 11/16"	6 5/16"	42770	278	BULK
931927A	941927A	19	3/4"	1-1/8"	1 11/32"	16 3/4"	7 1/16"	7 7/8"	60848	463	BULK
932230A	942230A	22	7/8"	1-1/4"	1 19/32"	18 7/8"	7 7/8"	9 1/16"	76280	690	BULK
932636A	942636A	26	1"	1-3/8"	1 13/16"	21 5/8"	8 11/16"	11 1/32"	93476	1036	BULK
932842A	942842A	28	-	1-5/8"	1 31/32"	25 3/16"	10 5/8"	11 13/16"	141096	1504	BULK

*Studs OD. = 20 mm

Note: All break loads are determined by thread

The user is responsible for choosing the proper cable diameter and for correct assembly

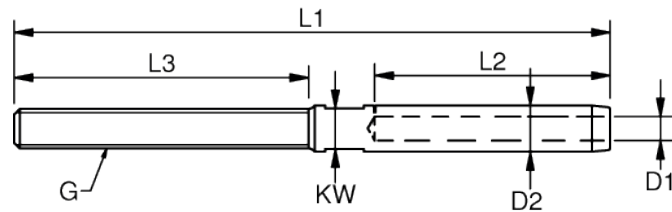


THREAD STUDS METRIC

Stainless steel - AISI 316

ART. NO. RIGHT	ART. NO. LEFT	G	WIRE	D1	D2	L1	L2	L3	KW	BL/LB	LB/100	PACK
900205	910205	M5	2	-	3/32"	7/32"	3 5/32"	15/16"	1 5/8"	3/16"	1764	3 BULK
902505	912505	M5	2.5	-	1/8"	7/32"	3 7/32"	1 1/16"	1 5/8"	3/16"	1764	3 BULK
900306	910306	M6	3	-	1/8"	1/4"	3 15/16"	1 1/2"	1 7/8"	3/16"	2646	4 BULK
900406	910406	M6	-	5/32"	3/16"	19/64"	4 11/32"	1 25/32"	1 7/8"	15/64"	2646	5 BULK
900408	910408	M8	-	5/32"	3/16"	19/64"	4 19/32"	1 25/32"	2 1/4"	15/64"	3748	7 BULK
900508	910508	M8	-	3/16"	7/32"	11/32"	4 27/32"	2"	2 1/4"	9/32"	4850	9 BULK
900510	910510	M10	-	3/16"	7/32"	11/32"	5 1/8"	2"	2 15/32"	9/32"	5512	10 BULK
900610	910610	M10	6	-	1/4"	1/2"	5 23/32"	2 17/32"	2 15/32"	7/16"	7716	19 BULK
900612	910612	M12	6	-	1/4"	1/2"	6 3/8"	2 17/32"	3 5/32"	7/16"	11244	24 BULK
900712	910712	M12	-	9/32"	19/64"	9/16"	6 11/16"	2 3/4"	3 5/32"	15/32"	11244	29 BULK
900714	910714	M14	-	9/32"	19/64"	9/16"	7 1/16"	2 3/4"	3 1/2"	15/32"	14991	35 BULK
900812	910812	M12	-	5/16"	11/32"	5/8"	7 5/16"	3 9/32"	3 5/32"	9/16"	11244	42 BULK
900814	910814	M14	-	5/16"	11/32"	5/8"	7 5/8"	3 9/32"	3 1/2"	9/16"	15212	44 BULK
900816	910816	M16	-	5/16"	11/32"	5/8"	8"	3 9/32"	3 15/16"	9/16"	19180	51 BULK
901016	911016	M16	10	-	13/32"	11/16"	8 1/4"	3 1/2"	3 15/16"	19/32"	20723	77 BULK
* 901020	911020	M20	10	-	13/32"	11/16"	9 1/16"	3 1/2"	4 23/32"	19/32"	21385	77 BULK
* 901220	911220	M20	12	-	1/2"	25/32"	9 13/16"	4 1/8"	4 23/32"	21/32"	25133	99 BULK
901220X	911220X	M20	12	-	1/2"	27/32"	10 7/16"	4 23/32"	4 23/32"	3/4"	31306	110 BULK
901422	911422	M22	14	-	19/32"	31/32"	12 1/8"	5 1/2"	5 1/2"	7/8"	35053	169 BULK
901622	912622	M22	-	5/8"	21/32"	1 1/8"	13 1/8"	6 5/16"	5 1/2"	31/32"	40124	216 BULK
901624	911624	M24	-	5/8"	21/32"	1 1/8"	14 5/16"	6 5/16"	6 11/16"	31/32"	42770	245 BULK
901927	911927	M27	-	3/4"	25/32"	1 11/32"	16 3/4"	7 7/8"	7 1/16"	1 3/16"	50706	461 BULK
902027	912027	M27	20	-	13/16"	1 11/32"	16 3/4"	7 7/8"	7 1/16"	1 3/16"	50706	454 BULK
902230	912230	M30	-	7/8"	15/16"	1 19/32"	18 7/8"	9 1/16"	7 7/8"	1 3/8"	61729	692 BULK
902636	912636	M36	-	1"	1 3/32"	1 13/16"	21 5/8"	11 1/32"	8 11/16"	1 5/8"	90390	1036 BULK
M902848	M912848	M48	-	1 1/8"	1 5/32"	1 31/32"	24 13/16"	11 5/8"	11 1/32"	1 3/4"	154300	1725 BULK
M903052	M913052	M52	-	1 3/16"	1 1/4"	2 9/32"	27 3/32"	12 7/16"	12 1/4"	1 31/32"	176300	2458 BULK
M903256	M913256	M56	-	1 1/4"	1 5/16"	2 9/32"	28 3/4"	22 1/8"	13"	1 31/32"	198400	2732 BULK
M903660	M913660	M60	36	-	1 15/32"	2 9/16"	31 1/4"	14 13/16"	13 3/4"	2 1/4"	253500	3567 BULK

*Studs OD. = 20 mm/E-die



The wide range of threaded Blue Wave studs are engraved with wire size and swage depth for easy use when swaging onto the wire. The studs are available with left handed or right handed threads and with split pin hole on request.



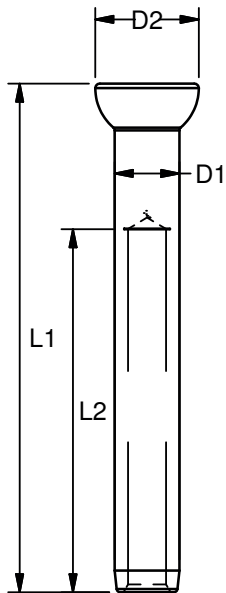
BLUE WAVE SWAGE STEM BALLS

Polished stainless steel - AISI 316



ART. NO.	WIRE	D1	D2	L1	L2	LB/100	PACK
620003	3	-	1/4"	33/64"	2 9/32"	1 1/2"	20
620032	-	1/8"	1/4"	33/64"	2 9/32"	1 1/2"	20
620004	4	5/32"	19/64"	5/8"	2 23/32"	1 25/32"	20
620005	5	3/16"	11/32"	3/4"	3 1/8"	2"	20
620055	-	7/32"	7/16"	25/32"	3 11/32"	2 9/32"	20
620055X	-	7/32"	1/2"	25/32"	3 17/32"	2 9/32"	18
620006	6	-	1/2"	25/32"	3 17/32"	2 17/32"	20
620006X	6	-	1/2"	27/32"	3 17/32"	2 17/32"	18
620063	-	1/4"	1/2"	25/32"	3 17/32"	2 17/32"	20
620007	7	-	9/16"	27/32"	3 11/16"	2 3/4"	22
620008	8	5/16"	5/8"	1 1/32"	4 9/16"	3 9/32"	37
620095	-	3/8"	11/16"	1 3/32"	4 31/32"	3 1/2"	52
620010	10	-	11/16"	1 3/32"	5 3/32"	3 1/2"	52
620010X	10	-	11/16"	1 1/8"	5 3/32"	3 1/2"	48
620011	-	7/16"	49/64"	1 19/64"	6 7/32"	4 21/64"	73,5
* 620012	12	-	25/32"	1 1/8"	5 23/32"	4 1/8"	59
620012X	12	-	27/32"	1 5/32"	6 5/16"	4 23/32"	60
620010A	10	-	11/16"	1 1/4"	5 1/32"	3 1/2"	52
620012A	12	-	27/32"	1 13/32"	6 1/2"	4 23/32"	59
620014A	14	-	31/32"	1 19/32"	7 11/16"	5 1/2"	129
620016A	16	5/8"	1 1/8"	1 3/4"	8 1/4"	6 5/16"	158

Note: "A" marked stemball terminals are for tip cup use - delivery and price on request



The Blue Wave swage stemball feature engraved size, logo and swage depth marking for faster and easier swaging.

SPECIALIZED SWAGE STEM BALL

Polished stainless steel - AISI 316

ART. NO.	WIRE	D1	D2	L1	L2	FITS COQUILLE	BL/LB	LB/100	PACK
620004V	4	5/32"	19/64"	13/16"	2 3/4"	1 25/32"	VMG 42034506	3748	8
620005V	5	3/16"	11/32"	13/16"	3 1/32"	2"	VMG 42034506	5291	10
620055V	-	7/32"	7/16"	13/16"	3 3/8"	2 9/32"	VMG 42034506	8598	14
620006V	6	-	1/2"	1 1/32"	3 21/32"	2 17/32"	VMG 42034708	9921	23
620063V	-	1/4"	1/2"	1 1/32"	3 21/32"	2 17/32"	VMG 42034708	9700	22
620007V	7	9/32"	9/16"	1 1/32"	4 1/32"	2 3/4"	VMG 42034708	12566	29
620008V	8	5/16"	5/8"	1 1/8"	4 21/32"	3 9/32"	VMG 42034010	15873	40
620095V	-	3/8"	11/16"	1 1/8"	5 1/2"	3 15/16"	VMG 42034010	18739	53
620010V	10	-	11/16"	1 1/8"	5 1/2"	3 15/16"	VMG 42034010	17857	52
* 620012V	12	-	25/32"	1 1/8"	6 9/16"	4 23/32"	VMG 42034012	20944	70
620004Z	4	5/32"	19/64"	9/16"	2 3/4"	1 25/32"	Z Spar 423	3748	5
620005Z	5	3/16"	11/32"	9/16"	3 1/32"	2"	Z Spar 423	5291	7
620055Z	-	7/32"	7/16"	27/32"	3 3/8"	2 9/32"	Z Spar 428	8598	14
620006Z	6	-	1/2"	27/32"	3 17/32"	2 17/32"	Z Spar 428	11905	19
620063Z	-	1/4"	1/2"	27/32"	3 17/32"	2 17/32"	Z Spar 428	11464	18
620007Z	7	9/32"	9/16"	1 1/32"	4 1/32"	2 3/4"	Z Spar 424	12566	28
620008Z	8	5/16"	5/8"	1 1/32"	4 9/16"	3 9/32"	Z Spar 424	15873	38
620095Z	-	3/8"	11/16"	1 1/8"	5 1/2"	3 15/16"	Z Spar 426	18739	53
620010Z	10	-	11/16"	1 1/8"	5 1/2"	3 15/16"	Z Spar 426	17857	52
620004S	4	5/32"	19/64"	5/8"	2 3/4"	1 25/32"	Sparecraft 3100 1080 044	3748	6
620005S	5	3/16"	11/32"	3/4"	3 1/32"	2"	Sparecraft 3100 1080 054	5291	9
620055S	-	7/32"	7/16"	7/8"	3 3/8"	2 9/32"	Sparecraft 3100 1080 064	7937	15
620006S	6	-	1/2"	7/8"	3 17/32"	2 17/32"	Sparecraft 3100 1080 064	11905	19
620063S	-	1/4"	1/2"	7/8"	3 17/32"	2 17/32"	Sparecraft 3100 1080 064	11464	19
620007S	7	9/32"	9/16"	7/8"	4 1/32"	2 3/4"	Sparecraft 3100 1080 074	14991	26
620008S	8	5/16"	5/8"	1 5/32"	4 9/16"	3 9/32"	Sparecraft 3100 1080 084	15873	41
620095S	-	3/8"	11/16"	1 5/32"	5 1/2"	3 15/16"	Sparecraft 3100 1080 104	18739	54
620010S	10	-	11/16"	1 5/32"	5 1/2"	3 15/16"	Sparecraft 3100 1080 104	17857	53
* 620012S	12	-	25/32"	1 5/32"	6 5/8"	4 23/32"	Sparecraft 3100 1080 104	20944	72

Note: "A" marked swage stemball are for tip cup use - delivery and price on request

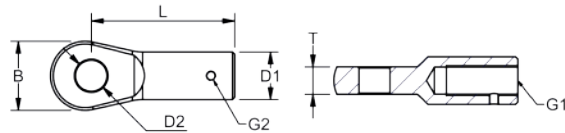


**REMOVABLE
EYE SYSTEM**

INSIDE THREADED EYES

Polished stainless steel - AISI 316

ART. NO.	G1	G2	L	T	B	D1	D2	BL/LB	LB/100	PACK
511908A	5/16"	M4	1 5/8"	3/16"	21/32"	9/16"	11/32"	4850	8	BULK
511910A	3/8"	M4	1 11/16"	15/64"	29/32"	19/32"	3/8"	7496	11	BULK
511911A	7/16"	M4	2 9/32"	5/16"	15/16"	23/32"	7/16"	10141	20	BULK
511912A	1/2"	M4	2 17/32"	13/32"	1 3/16"	25/32"	33/64"	13448	32	BULK
511916A	5/8"	M6	3 1/16"	15/32"	1 3/8"	1 1/8"	21/32"	21826	68	BULK
511920A	3/4"	M6	3 17/32"	5/8"	1 11/16"	1 3/16"	25/32"	31747	95	BULK

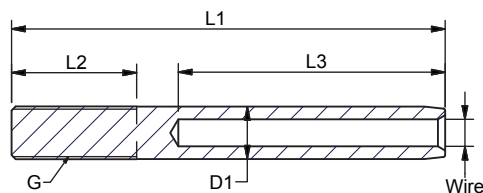


SHORT THREAD STUDS FOR INSIDE THREAD EYE

Polished stainless steel - AISI 316

ART. NO.	WIRE	G	D1	L1	L2	L3	BL/LB	LB/100	PACK
510408A	4 5/32"	5/16"	19/64"	2 11/16"	7/16"	1 25/32"	3748	4	BULK
510408	4 5/32"	M8	19/64"	2 7/8"	15/32"	1 25/32"	3748	4	BULK
510508	5 3/16"	M8	11/32"	3 7/32"	15/32"	2"	4850	6	BULK
510508A	5 3/16"	5/16"	11/32"	3 3/16"	19/32"	2"	4850	7	BULK
510510A	5 3/16"	3/8"	11/32"	3 7/32"	25/32"	2"	5291	7	BULK
510608	6 -	M8	1/2"	3 25/32"	15/32"	2 17/32"	4850	15	BULK
510611A	6 -	7/16"	1/2"	4 3/32"	1 3/16"	2 17/32"	10141	17	BULK
510612A	6 -	1/2"	1/2"	4 3/32"	1 3/16"	2 17/32"	11905	19	BULK
510712A	7 9/32"	1/2"	9/16"	4 17/32"	1 3/16"	2 3/4"	13448	23	BULK
510812A	8 5/16"	1/2"	5/8"	4 27/32"	1 3/16"	3 9/32"	13448	31	BULK
510816A	8 5/16"	5/8"	5/8"	4 27/32"	1 3/16"	3 9/32"	19180	37	BULK
511016A	10 -	5/8"	11/16"	6 1/8"	1 9/16"	4 1/8"	21385	48	BULK
511020A	10 -	3/4"	11/16"	6 1/8"	1 9/16"	3 1/2"	21385	57	BULK
511220A	12 -	3/4"	25/32"	7 5/16"	1 31/32"	4 23/32"	25133	72	BULK
511329A	-	1/2"	3/4"	27/32"	7 5/16"	1 31/32"	28440	78	BULK

Note: All break loads are determined by thread



SWAGELESS FITTINGS

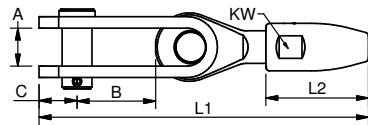
Our range of swageless end fittings are ideal for emergency repairs or any other job that would normally require professional swaging. Designed for 1x19 wire construction. Also available for compacted and Dyform wire constructions.



SWAGELESS CONE TOGGLES

Polished stainless steel - AISI 316

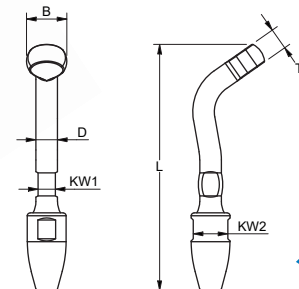
ART. NO.	WIRE 1x19	PIN	A	B	C	KW	L1	L2	BL/LB	LB/100	
SC830804	4	5/32"	5/16"	13/32"	25/32"	11/32"	15/32"	3 11/32"	1 15/32"	4850	19
SC831047	-	3/16"	3/8"	15/32"	1 1/32"	15/32"	9/16"	4 1/32"	1 3/16"	6173	35
SC831005	5	-	3/8"	15/32"	1 1/32"	15/32"	9/16"	4 1/32"	1 3/16"	6173	35
SC831355	-	7/32"	1/2"	23/32"	1 3/8"	23/32"	21/32"	5 3/16"	1 1/2"	11023	67
SC831306	6	-	1/2"	23/32"	1 3/8"	23/32"	21/32"	5 3/16"	1 1/2"	11023	67
SC831363	-	1/4"	1/2"	23/32"	1 3/8"	23/32"	21/32"	5 3/16"	1 1/2"	11023	67
SC831307	7	9/32"	1/2"	23/32"	1 3/8"	23/32"	3/4"	5 23/32"	1 13/16"	13228	79
SC831308	8	5/16"	1/2"	23/32"	1 3/8"	23/32"	7/8"	6 1/4"	2 1/8"	13669	94
SC831608	8	5/16"	5/8"	25/32"	1 5/8"	25/32"	7/8"	6 13/16"	2 1/8"	17637	143
SC831695	-	3/8"	5/8"	25/32"	1 39/64"	25/32"	1 1/16"	7 23/64"	2 33/64"	20671	171
SC831995	-	3/8"	3/4"	15/16"	1 25/32"	31/32"	1 1/16"	7 15/16"	2 17/32"	24251	243
SC831910	10	-	3/4"	15/16"	1 25/32"	31/32"	1 1/16"	7 15/16"	2 17/32"	24251	243
SC831911	-	7/16"	3/4"	15/16"	1 25/32"	31/32"	1 5/16"	8 7/8"	3 7/32"	37479	312
SC831912	12	-	3/4"	15/16"	1 25/32"	31/32"	1 5/16"	8 7/8"	3 7/32"	37479	312
SC831913	-	1/2"	3/4"	15/16"	1 25/32"	31/32"	1 5/16"	8 7/8"	3 7/32"	37479	312
SC832214	14	-	7/8"	1 1/32"	1 7/8"	1 3/16"	1 15/32"	9 3/4"	3 1/2"	50706	448
SC832516	16	5/8"	1"	1 5/32"	2 13/32"	1 15/32"	1 5/8"	11 1/4"	3 15/16"	61729	685
SC832819	19	3/4"	1 1/8"	1 11/32"	2 9/16"	1 11/32"	1 23/32"	12 9/16"	4 17/32"	66139	912
SC833522	22	7/8"	1 3/8"	1 23/32"	3 9/32"	1 5/8"	1 31/32"	14 13/16"	4 29/32"	83776	1478
SC833526	26	1"	1 3/8"	1 23/32"	3 9/32"	1 5/8"	2 19/32"	15 7/8"	5 29/32"	105822	1955



SWAGELESS CONE SHROUD

Polished stainless steel - AISI 316

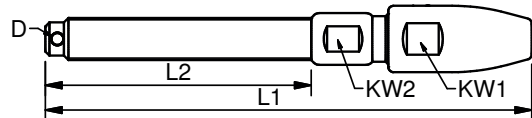
ART. NO.	WIRE 1x19	B	D	T	L	KW 1	KW 2	BL/LB	LB/100	fits backing plates:		
										BW	NAVTEC	
SC867504SH	4	5/32"	19/32"	5/16"	5/16"	3 3/8"	15/64"	1/2"	4850	11	616105	-
SC860905SH	5	3/16"	23/32"	3/8"	3/8"	3 15/16"	9/32"	9/16"	6173	17,6	616105	-
SC861206SH	6	-	27/32"	1/2"	1/2"	4 15/16"	7/16"	11/16"	11023	37,5	-	N841-M06
SC861263SH	-	1/4"	27/32"	1/2"	1/2"	4 15/16"	7/16"	11/16"	11023	37,5	-	N841-M06
SC861407SH	7	9/32"	1 1/32"	9/16"	9/16"	5 7/16"	1/2"	3/4"	13228	58	-	N841-M07
SC861608SH	8	5/16"	1 3/16"	5/8"	5/8"	6 5/8"	9/16"	7/8"	17637	85,6	-	N841-M08
SC861895SH	-	3/8"	1 1/4"	11/16"	11/16"	8"	19/32"	1/16"	24251	135	-	N841-M10



SWAGELESS CONE THREAD STUD UNF

Polished stainless steel - AISI 316

ART. NO.	WIRE 1x19	G	D	KW1	KW2	L1	L2	BL/LB	LB/100	
SC800408A	4	5/32"	5/16"	1/8"	15/32"	5/16"	4 3/32"	2 1/4"	4850	12
SC804708A	-	3/16"	5/16"	1/8"	9/16"	13/32"	4 11/32"	2 1/4"	4850	17
SC804710A	-	3/16"	3/8"	1/8"	9/16"	13/32"	4 17/32"	15/64"	6173	19
SC800508A	5	-	5/16"	1/8"	9/16"	13/32"	4 11/32"	2 1/4"	4850	17
SC800510A	5	-	3/8"	1/8"	9/16"	13/32"	4 17/32"	2 15/32"	6173	19
SC805510A	-	7/32"	3/8"	1/8"	21/32"	13/32"	5 5/32"	2 15/32"	7496	30
SC805511A	-	7/32"	7/16"	1/8"	21/32"	33/64"	5 5/16"	2 3/4"	10141	34
SC800611A	6	-	7/16"	1/8"	21/32"	33/64"	5 5/16"	2 3/4"	10141	33
SC800612A	6	-	1/2"	1/8"	21/32"	33/64"	5 21/32"	3 5/32"	11023	39
SC806311A	-	1/4"	7/16"	1/8"	21/32"	33/64"	5 5/16"	2 3/4"	10141	33
SC806312A	-	1/4"	1/2"	1/8"	21/32"	33/64"	5 21/32"	3 5/32"	11023	39
SC800711A	7	9/32"	7/16"	1/8"	3/4"	19/32"	5 3/4"	2 3/4"	10141	45
SC800712A	7	9/32"	1/2"	1/8"	3/4"	19/32"	6 1/16"	3 5/32"	13228	50
SC800812A	8	5/16"	1/2"	1/8"	7/8"	21/32"	6 1/2"	3 5/32"	13448	66
SC800816A	8	5/16"	5/8"	3/16"	7/8"	21/32"	7 1/4"	3 15/16"	17637	81
SC809516A	-	3/8"	5/8"	3/16"	1 1/16"	3/4"	7 7/8"	3 15/16"	21826	116
SC809520A	-	3/8"	3/4"	3/16"	1 1/16"	3/4"	8 9/16"	4 23/32"	24251	140
SC801016A	10	-	5/8"	3/16"	1 1/16"	3/4"	7 7/8"	3 15/16"	21826	115
SC801020A	10	-	3/4"	3/16"	1 1/16"	3/4"	8 9/16"	4 23/32"	24251	140
SC801120A	-	7/16"	3/4"	3/16"	1 5/16"	15/16"	9 9/16"	4 23/32"	31747	220
SC801220A	12	-	3/4"	3/16"	1 5/16"	15/16"	9 9/16"	4 23/32"	31747	219
SC801222A	12	-	7/8"	7/32"	1 5/16"	15/16"	10 5/16"	5 1/2"	37479	253
SC801320A	-	1/2"	3/4"	3/16"	1 5/16"	15/16"	9 9/16"	4 23/32"	31747	218
SC801322A	-	1/2"	7/8"	7/32"	1 5/16"	15/16"	10 5/16"	5 1/2"	37479	252
SC801422A	14	-	7/8"	7/32"	1 15/32"	1 1/16"	10 13/16"	5 1/2"	43211	309
SC801625A	16	5/8"	1"	7/32"	1 5/8"	1 1/4"	12 1/2"	6 11/16"	47179	448
SC801927A	19	3/4"	1 1/8"	7/32"	1 23/32"	1 11/32"	13 9/16"	7 1/16"	60848	584
SC802230A	22	7/8"	1 1/4"	7/32"	1 31/32"	1 5/8"	15 7/16"	7 7/8"	76280	855

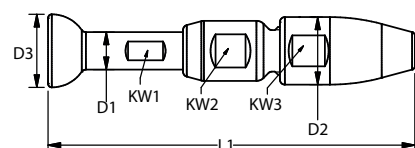


SWAGELESS CONE STEMBALLS

Polished stainless steel - AISI 316

ART. NO.	WIRE 1x19	D1	D2	D3	L1	KW1	KW2	KW3	LB/100	
SC621404Z	4	5/32"	19/64"	17/32"	9/16"	2 7/8"	1/4"	13/32"	15/32"	11
SC621604	4	5/32"	19/64"	17/32"	5/8"	2 7/8"	1/4"	13/32"	15/32"	12
SC621405Z	5	3/16"	11/32"	5/8"	9/16"	3 1/32"	5/16"	7/16"	9/16"	16
SC621905	5	3/16"	11/32"	5/8"	3/4"	3 1/8"	5/16"	7/16"	9/16"	18
SC622055	-	7/32"	7/16"	3/4"	25/32"	3 17/32"	11/32"	33/64"	21/32"	28
SC622006	6	-	1/2"	3/4"	25/32"	3 19/32"	7/16"	19/32"	21/32"	30
SC622106S	6	-	1/2"	3/4"	27/32"	3 19/32"	7/16"	19/32"	21/32"	31
SC622063	-	1/4"	1/2"	3/4"	25/32"	3 19/32"	7/16"	19/32"	21/32"	30
SC622163S	-	1/4"	1/2"	3/4"	27/32"	3 19/32"	7/16"	19/32"	21/32"	31
SC622107	7	9/32"	9/16"	7/8"	27/32"	4 3/8"	15/32"	5/8"	3/4"	46
SC622607Z	7	9/32"	9/16"	7/8"	1 1/32"	4 3/8"	15/32"	5/8"	3/4"	50
SC622608	8	5/16"	5/8"	31/32"	1 1/32"	5 3/16"	9/16"	23/32"	7/8"	73
SC622795	-	3/8"	11/16"	1 3/16"	1 3/32"	5 29/32"	19/32"	7/8"	1 1/16"	115
SC622710	10	-	11/16"	1 3/16"	1 3/32"	5 29/32"	19/32"	7/8"	1 1/16"	115

Other sizes on request







3243
3243

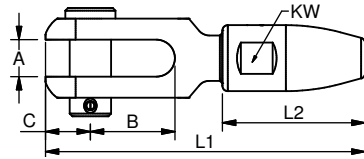
 **BLUE WAVE®**

SWAGELESS CONE FORKS

Polished stainless steel - AISI 316



ART. NO.	WIRE 1x19	PIN	A	B	C	KW	L1	L2	BL/LB	LB/100
SC840804	4 5/32"	5/16"	1/4"	5/8"	11/32"	15/32"	2 7/16"	1 1/16"	4850	13
SC841047	- 3/16"	3/8"	11/32"	13/16"	7/16"	9/16"	2 7/8"	1 3/16"	6173	23
SC841005	5 -	3/8"	11/32"	13/16"	7/16"	9/16"	2 7/8"	1 3/16"	6173	23
SC841355	- 7/32"	1/2"	7/16"	1 1/32"	17/32"	21/32"	3 17/32"	1 1/2"	9700	40
SC841306	6 -	1/2"	7/16"	1 1/32"	17/32"	21/32"	3 17/32"	1 1/2"	9700	40
SC841363	- 1/4"	1/2"	7/16"	1 1/32"	17/32"	21/32"	3 17/32"	1 1/2"	9700	40
SC841307	7 9/32"	1/2"	7/16"	1 5/32"	9/16"	3/4"	4 3/32"	1 13/16"	13228	58
SC841308	8 5/16"	1/2"	7/16"	1 3/16"	17/32"	7/8"	4 13/32"	2 1/8"	13228	70
SC841608	8 5/16"	5/8"	9/16"	1 1/4"	21/32"	7/8"	4 23/32"	2 1/8"	17637	93
SC841995	- 3/8"	3/4"	23/32"	1 3/8"	13/16"	1 1/16"	5 19/32"	2 17/32"	24251	156
SC841910	10 -	3/4"	23/32"	1 3/8"	13/16"	1 1/16"	5 19/32"	2 17/32"	24251	156
SC841911	- 7/16"	3/4"	23/32"	1 17/32"	13/16"	1 5/16"	6 3/8"	3 7/32"	37479	239
SC841912	12 -	3/4"	23/32"	1 17/32"	13/16"	1 5/16"	6 3/8"	3 7/32"	37479	239
SC841913	- 1/2"	3/4"	23/32"	1 17/32"	13/16"	1 5/16"	6 3/8"	3 7/32"	37479	239
SC842214	14 -	7/8"	25/32"	1 25/32"	31/32"	1 15/32"	7 3/8"	3 1/2"	50706	347
SC842516	16 5/8"	1"	7/8"	1 27/32"	1 1/32"	1 5/8"	7 7/8"	3 15/16"	61729	474
SC842819	19 3/4"	1 1/8"	1 1/16"	2 5/16"	1 9/32"	1 23/32"	9 5/16"	4 17/32"	66139	644
SC843522	22 7/8"	1 3/8"	1 1/4"	2 27/32"	2 3/4"	1 31/32"	10 13/16"	4 29/32"	83776	1075
SC843526	26 1"	1 3/8"	1 1/4"	2 27/32"	1 9/16"	2 19/32"	11 1/2"	5 29/32"	105822	1528

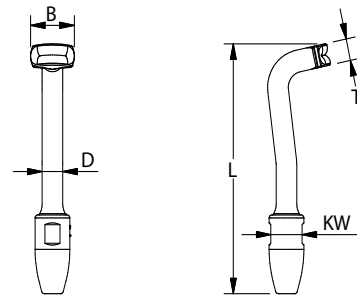


SWAGELESS CONE T

Polished stainless steel - AISI 316



ART. NO.	WIRE 1x19	B	D	T	L	KW 1	KW 2	BL/LB	LB/100
SC867504	4 5/32"	5/8"	5/16"	5/16"	3 3/8"	15/64"	1/2"	4850	11
SC860905	5 3/16"	3/4"	3/8"	3/8"	3 15/16"	9/32"	9/16"	6173	18
SC861206	6 -	1 1/16"	1/2"	1/2"	4 15/16"	7/16"	11/16"	11023	39
SC861263	- 1/4"	1 1/16"	1/2"	1/2"	4 15/16"	7/16"	11/16"	11023	39
SC861407	7 9/32"	1 1/8"	9/16"	9/16"	5 7/16"	1/2"	3/4"	13228	57
SC861608	8 5/16"	1 5/16"	5/8"	5/8"	6 5/8"	9/16"	7/8"	17637	87
SC861895	- 3/8"	1 7/16"	11/16"	11/16"	8"	19/32"	1 1/16"	24251	135
SC861810	10 -	1 7/16"	11/16"	11/16"	8"	19/32"	1 1/16"	24251	135



DYFORM AND COMPACTED SWAGELESS CONES

Polished stainless steel - AISI 316

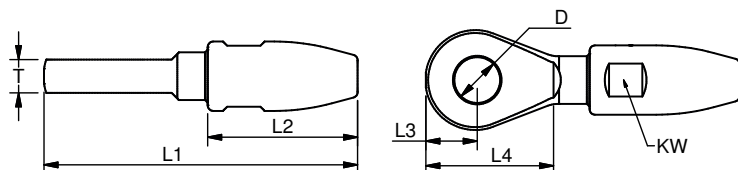
ART. NO.	EYE TERMINAL	THREAD TERMINAL	FORK TERMINAL	TOGGLE TERMINAL
4mm 1x7	SC820804C	SC800408AC	SC840804C	SC830804C
5mm 1x19	SC821005C	SC800510AC	SC841005C	SC831005C
6mm 1x19	SC821306C	SC800612AC	SC841306C	SC831306C
7mm 1x19	SC821307C	SC800712AC	SC841307C	SC831307C
8mm 1x19	SC821608C	SC800816AC	SC841608C	SC83608C
10mm 1x19	SC821910C	SC801020AC	SC841910C	SC831910C
12mm 1x19	SC821912C	SC801222AC	SC841912C	SC831912C
14mm 1x19	SC822214D	SC801422AD	SC842214D	SC832214D
14mm 1x36	SC822214C	SC801422AC	SC842214C	SC832214C
16mm 1x19	SC822516D	SC801625AD	SC842516D	SC832516D
16mm 1x36	SC822516C	SC801625AC	SC842516C	SC832516C



SWAGELESS CONE EYES

Polished stainless steel - AISI 316

ART. NO.	WIRE 1x19	D	T	KW	L1	L2	L3	L4	BL/LB	LB/100
SC820804	4 5/32"	5/16"	15/64"	15/32"	2 1/4"	1 1/16"	11/32"	31/32"	4850	8
SC821047	- 3/16"	13/32"	5/16"	9/16"	2 17/32"	1 3/16"	7/16"	1 1/8"	6173	14
SC821005	5 -	13/32"	5/16"	9/16"	2 17/32"	1 3/16"	7/16"	1 1/8"	6173	14
SC821355	- 7/32"	33/64"	13/32"	21/32"	3 1/16"	1 1/2"	9/16"	1 11/32"	11023	24
SC821306	6 -	33/64"	13/32"	21/32"	3 1/16"	1 1/2"	9/16"	1 11/32"	11023	24
SC821363	- 1/4"	33/64"	13/32"	21/32"	3 1/16"	1 1/2"	9/16"	1 11/32"	11023	24
SC821307	7 9/32"	33/64"	13/32"	3/4"	3 5/8"	1 13/16"	19/32"	1 1/2"	13228	36
SC821308	8 5/16"	33/64"	13/32"	7/8"	4 1/8"	2 1/8"	9/16"	1 17/32"	15432	51
SC821608	8 5/16"	21/32"	15/32"	7/8"	4 7/16"	2 1/8"	3/4"	1 13/16"	17637	61
SC821695	- 3/8"	21/32"	15/32"	1 1/16"	4 31/32"	2 17/32"	3/4"	1 13/16"	20944	89
SC821610	10 -	21/32"	15/32"	1 1/16"	4 31/32"	2 17/32"	3/4"	1 13/16"	20944	89
SC821995	- 3/8"	25/32"	5/8"	1 1/16"	5 1/4"	2 17/32"	13/16"	2 3/32"	24251	103
SC821910	10 -	25/32"	5/8"	1 1/16"	5 1/4"	2 17/32"	13/16"	2 3/32"	24251	103
SC821911	- 7/16"	25/32"	5/8"	1 5/16"	6 1/16"	3 7/32"	13/16"	2 7/32"	37479	172
SC821912	12 -	25/32"	5/8"	1 5/16"	6 1/16"	3 7/32"	13/16"	2 7/32"	37479	172
SC821913	- 1/2"	25/32"	5/8"	1 5/16"	6 1/16"	3 7/32"	13/16"	2 7/32"	37479	172
SC282214	14 -	29/32"	23/32"	1 15/32"	6 7/8"	3 1/2"	31/32"	2 17/32"	50706	236
SC822516	16 5/8"	1 1/32"	25/32"	1 5/8"	7 3/8"	3 15/16"	1 1/8"	2 23/32"	61729	319
SC822819	19 3/4"	1 1/8"	31/32"	1 23/32"	8 11/16"	4 17/32"	1 5/16"	3 9/32"	66139	474
SC823522	22 7/8"	1 13/32"	1 3/16"	1 31/32"	9 13/16"	4 29/32"	1 9/16"	3 15/16"	83776	705

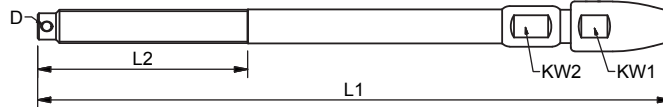


LONG SWAGELESS CONE THREAD STUDS UNF

Polished stainless steel - AISI 316



ART. NO.	WIRE 1x19	G	D	KW1	KW2	L1	L2	BL/LB	LB/100	
SC805511AL	-	7/32"	7/16"	1/8"	21/32"	33/64"	9 5/16"	2 3/4"	10141	54
SC800611AL	6	-	7/16"	1/8"	21/32"	33/64"	9 5/16"	2 3/4"	10141	54
SC806311AL	-	1/4"	7/16"	1/8"	21/32"	33/64"	9 5/16"	2 3/4"	10141	54
SC800612AL	6	-	1/2"	1/8"	21/32"	33/64"	9 1/2"	3 5/32"	11023	62
SC806312AL	-	1/4"	1/2"	1/8"	21/32"	33/64"	9 1/2"	3 5/32"	11023	62
SC800711AL	7	9/32"	7/16"	1/8"	3/4"	19/32"	10 1/16"	2 3/4"	10141	66
SC800712AL	7	9/32"	1/2"	1/8"	3/4"	19/32"	10 3/8"	3 5/32"	13228	76
SC800812AL	8	5/16"	1/2"	1/8"	7/8"	21/32"	11 9/16"	3 5/32"	13448	96
SC800816AL	8	5/16"	5/8"	3/16"	7/8"	21/32"	12 5/16"	3 15/16"	17637	127
SC809516AL	-	3/8"	5/8"	3/16"	1 1/16"	3/4"	13 1/2"	3 15/16"	21826	167
SC801016AL	10	-	5/8"	3/16"	1 1/16"	3/4"	13 1/2"	3 15/16"	21826	166
SC809520AL	-	3/8"	3/4"	3/16"	1 1/16"	3/4"	14 3/16"	4 23/32"	24251	219
SC801020AL	10	-	3/4"	3/16"	1 1/16"	3/4"	14 3/16"	4 23/32"	24251	219
SC801220AL	12	-	3/4"	3/16"	1 5/16"	15/16"	16 3/16"	4 23/32"	31747	312
SC801320AL	-	1/2"	3/4"	3/16"	1 5/16"	15/16"	16 3/16"	4 23/32"	31747	310
SC801222AL	12	-	7/8"	7/32"	1 5/16"	31/32"	17 1/2"	5 1/2"	37479	387
SC801322AL	-	1/2"	7/8"	7/32"	1 5/16"	31/32"	17 1/2"	5 1/2"	37479	386

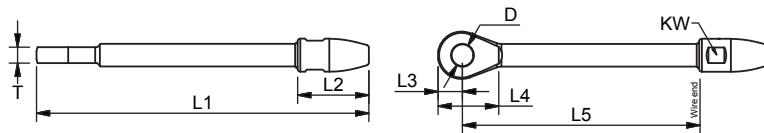


LONG SWAGELESS CONE EYES

Polished stainless steel - AISI 316



ART. NO.	WIRE 1x19	D	T	KW	L1	L2	L3	L4	L5	BL/KG	KG/100	
SC821355L	-	7/32"	13	10	17	188	38	14	34	136	5000	21,9
SC821306L	6	-	13	10	17	188	38	14	34	136	5000	21,8
SC821363L	-	1/4"	13	10	17	188	38	14	34	136	5000	21,8
SC821307L	7	9/32"	13	10	19	212	46	15	38	153	6000	31,6
SC821608L	8	5/16"	16,5	12	22	252	54	19	46	180	8000	53,4
SC821995L	-	3/8"	19,5	16	27	319	64	21	53	235	11000	94,6
SC821910L	10	-	19,5	16	27	319	64	21	53	235	11000	94,5
SC821912L	12	-	19,5	16	33	362	82	21	56	262	17000	152
SC821913L	-	1/2"	19,5	16	33	362	82	21	56	262	17000	151,4



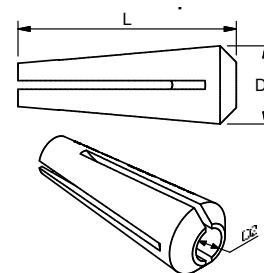
CONES FOR 1x19

ART. NO.	WIRE	D1	D2	L	LB/100	
C04-1X19	4	5/32"	7/32"	3/32"	9/16"	0.2
C476-1X19	-	3/16"	1/4"	1/8"	23/32"	0.4
C05-1X19	5	3/16"	1/4"	1/8"	5/8"	0.4
C555-1X19	-	7/32"	11/32"	5/32"	1 1/32"	1.1
C06-1X19	6	-	11/32"	5/32"	7/8"	0.9
C635-1X19	-	1/4"	11/32"	5/32"	27/32"	0.9
C07-1X19	7	9/32"	3/8"	3/16"	15/16"	0.9
C08-1X19	8	5/16"	7/16"	3/16"	1 3/16"	1.8
C952-1X19	-	3/8"	17/32"	15/64"	1 1/2"	3.1
C10-1X19	10	-	33/64"	1/4"	1 11/32"	2.6
C111-1X19	-	7/16"	11/16"	9/32"	2 1/4"	7.9
C12-1X19	12	-	21/32"	5/16"	1 7/8"	6.8
C127-1X19	-	1/2"	21/32"	5/16"	1 11/16"	5.7
C14-1X19	14	-	3/4"	11/32"	2"	8.6
C16-1X19	16	5/8"	27/32"	13/32"	2 11/32"	14
C19-1X19	19	3/4"	31/32"	15/32"	2 11/16"	21
C22-1X19	22	7/8"	1 1/8"	9/16"	3 1/16"	30
C26-1X19	26	1"	1 11/32"	5/8"	3 11/16"	55



CONES FOR DYFORM - COMPACTED

ART. NO.	WIRE	D1	D2	L	LB/100
C04-C1X7	4mm 1x7	3/16"	3/32"	9/16"	0.2
C05-C1X19	5mm 1x19	1/4"	1/8"	9/16"	0.2
C06-C1X19	6mm 1x19	5/16"	1/8"	27/32"	0.7
C07-C1X19	7mm 1x19	11/32"	3/16"	7/8"	0.9
C08-C1X19	8mm 1x19	13/32"	3/16"	1 1/32"	1.1
C10-C1X19	10mm 1x19	15/32"	1/4"	1 7/32"	2.0
C12-C1X19	12mm 1x19	5/8"	5/16"	1 11/16"	5.3
C14-C1X19	14mm 1x19	11/16"	5/16"	1 13/16"	6.6
C14-C1X36	14mm 1x36	3/4"	7/16"	1 23/32"	7.3
C16-C1X19	16mm 1x19	27/32"	7/16"	1 7/8"	11



The Blue Wave swageless can be reused if the inner cone is replaced with a new one.
Supplied with engraved part no. for easy



LIFELINE FITTINGS



This top of the line gate hook is one-hand operated and based on the "over the center" principle where the load is carried on the body.

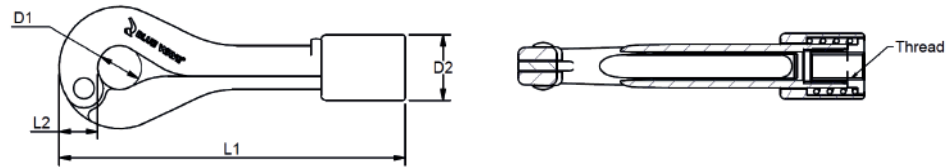


Community Design Registration 8/8 2019

GATE HOOK ONE SNAP

Polished stainless steel - AISI 316

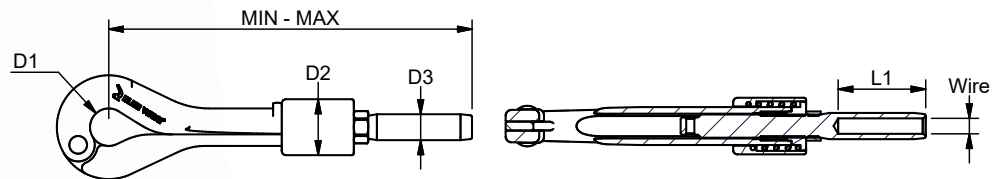
ART. NO.	THREAD	D1	D2	L1	L2	BL/KG	KG/100	PACK
GH06	M6	10	17	81	10	500	9,6	BULK
GH06A	1/4"	10	17	81	10	500	9,5	BULK
GH08	M8	13	19	103	11,5	1200	14,5	BULK
GH08A	5/16"	13	19	103	11,5	1200	14,4	BULK



GATE HOOK ONE SNAP WITH STUD

Polished stainless steel - AISI 316

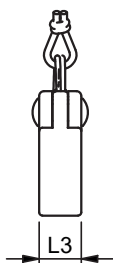
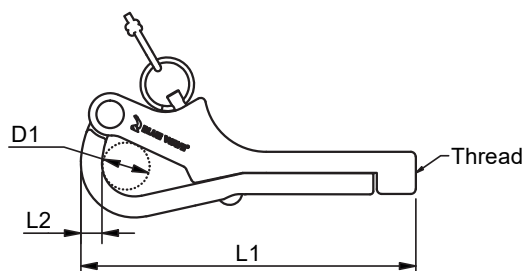
ART. NO.	WIRE	THREAD	D1	D2	D3	L1	MIN - MAX	KG/100	
GH0306	3	1/8"	M6	10	17	6,4	26	101 - 124	11,3
GH0306A	3	1/8"	1/4"	10	17	6,4	26	100 - 117	11,3
GH0308	3	1/8"	M8	13	19	6,4	26	121 - 156	17,3
GH0308A	3	1/8"	5/16"	13	19	6,4	26	121 - 141	17,3
GH0406	4	5/32"	M6	10	17	7,5	28	104 - 127	11,5
GH0406A	4	5/32"	1/4"	10	17	7,5	28	104 - 121	11,7
GH0408	4	5/32"	M8	13	19	7,5	28	123 - 158	17,9
GH0408A	4	5/32"	5/16"	13	19	7,5	28	123 - 143	17,3
GH0506	5	3/16"	M6	10	17	9	30	107 - 130	12,1
GH0506A	5	3/16"	1/4"	10	17	9	30	107 - 124	12,1
GH0508	5	3/16"	M8	13	19	9	30	126 - 161	18
GH0508A	5	3/16"	5/16"	13	19	9	30	126 - 146	17,8



GATE HOOK

Stainless steel - AISI 316

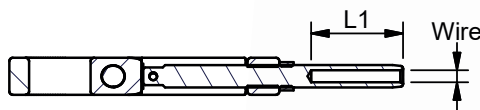
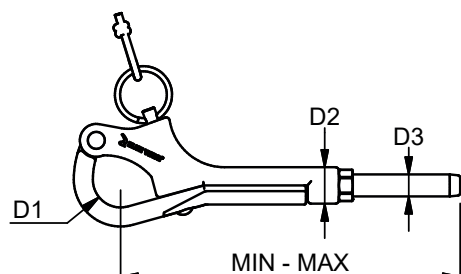
ART. NO.	THREAD RH	D1	L1	L2	L3	BL/KG	KG/100	PACK
GH4506	M6	12	76	5	10	1200	6	BULK
GH4506A	1/4"	12	76	5	10	1200	6	BULK
GH4508	M8	15	104	6,5	13	1400	12,5	BULK
GH4508A	5/16"	15	104	6,5	13	1400	12,5	BULK



GATE HOOK WITH STUD

Stainless steel - AISI 316

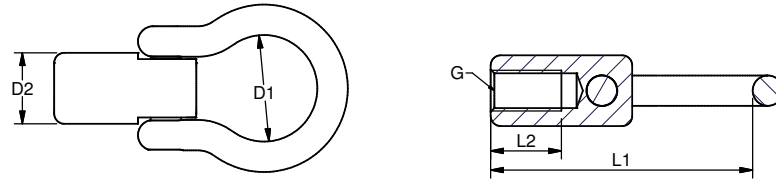
ART. NO.	WIRE	THREAD	D1	D2	D3	L1	MIN - MAX	KG/100	
GH450306	3	1/8"	M6	12	10,5	6,4	26	100 - 130	8,9
GH450306A	3	1/8"	1/4"	12	10,5	6,4	26	100 - 123	8,9
GH450308	3	1/8"	M8	15	13	6,4	26	124 - 164	17,4
GH450308A	3	1/8"	5/16"	15	13	6,4	26	125 - 149	16,7
GH450406	4	5/32"	M6	12	10,5	7,5	28	103 - 133	9,1
GH450406A	4	5/32"	1/4"	12	10,5	7,5	28	103 - 126	9,2
GH450408	4	5/32"	M8	15	13	7,5	28	126 - 166	17,6
GH450408A	4	5/32"	5/16"	15	13	7,5	28	126 - 150	16,9
GH450506	5	3/16"	M6	12	10,5	9	30	106 - 136	9,6
GH450506A	5	3/16"	1/4"	12	10,5	9	30	106 - 129	9,6
GH450508	5	3/16"	M8	15	13	9	30	130 - 170	18,1
GH450508A	5	3/16"	5/16"	15	13	9	30	130 - 154	17,4



SINGLE GATE EYE

Polished stainless steel - AISI 316

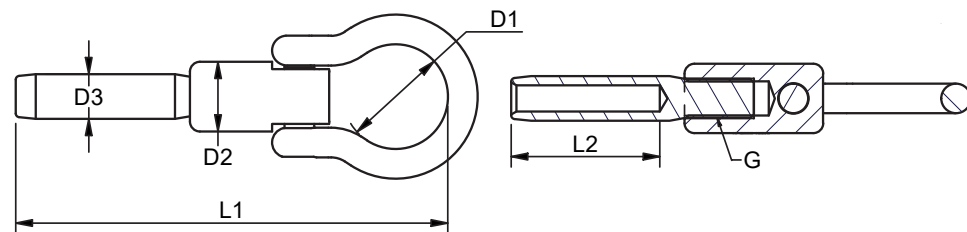
ART. NO.	G	D1	D2	L1	L2	BL/KG	KG/100	PACK
GE08A	5/16"	21	14	52	14	1200	5,2	10



SINGLE GATE EYE WITH STUD

Polished stainless steel - AISI 316

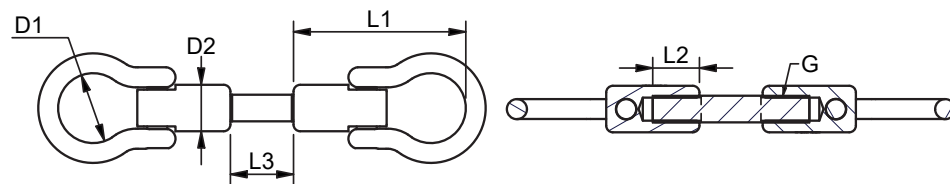
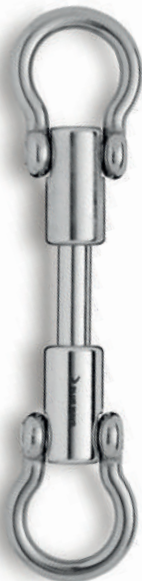
ART. NO.	WIRE	G	D1	D2	D3	L1	L2	KG/100	PACK	
GE0308A	3	1/8"	5/16"	21	14	6,35	83	26	6,2	10
GE0408A	4	5/32"	5/16"	21	14	7,5	85	28	6,5	10
GE0508A	5	3/16"	5/16"	21	14	9	87	30	6,8	10



SINGLE GATE EYE TO EYE FITTING

Polished stainless steel - AISI 316

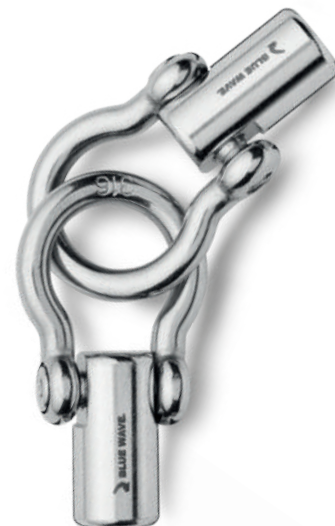
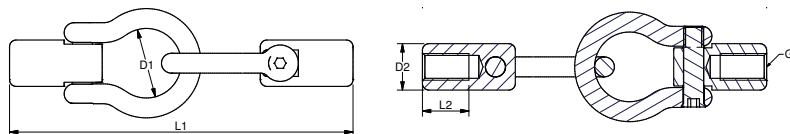
ART. NO.	G	D1	D2	L1	L2	L3	BL/KG	KG/100	PACK
EE08A	5/16"	21	14	52	14	3/4" - 1"	1200	12,1	10



DOUBLE GATE EYE

Polished stainless steel - AISI 316

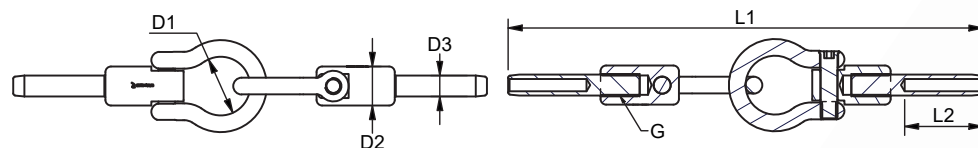
ART. NO.	G	D1	D2	L1	L2	BL/KG	KG/100	PACK
GE08AD	5/16"	21	14	104	14	1200	10,4	10



DOUBLE GATE EYE WITH STUD

Polished stainless steel - AISI 316

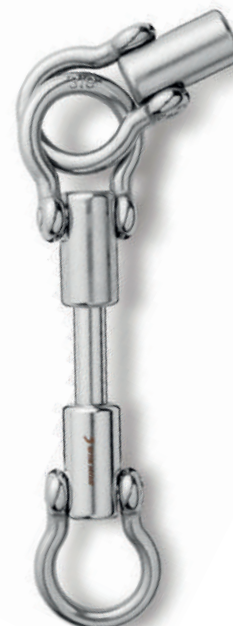
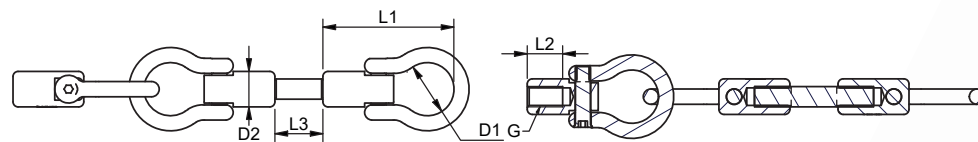
ART. NO.	WIRE	G	D1	D2	D3	L1	L2	KG/100	PACK	
GE0308AD	3	1/8"	5/16"	21	14	6,35	166	26	12,5	10
GE0408AD	4	5/32"	5/16"	21	14	7,5	170	28	12,7	10



DOUBLE GATE EYE TO EYE FITTING

Polished stainless steel - AISI 316

ART. NO.	G	D1	D2	L1	L2	L3	BL/KG	KG/100	PACK
EEE08A	5/16"	21	14	52	14	3/4" - 1"	1200	17,3	10



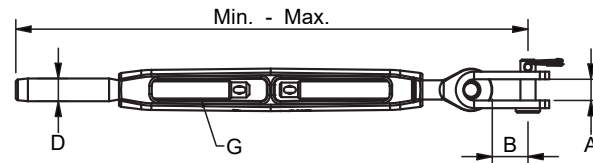


LIFELINE TURNBUCKLE TOGGLE/STUD UNF

Polished stainless steel - AISI 316 and chromed bronze body

ART. NO.	WIRE	G	PIN	A	B	MIN - MAX	BL/KG	KG/100	PACK
330306A5	3 1/8"	1/4"	5	7	11,5	166 - 235	1000	9,8	10
330406A5	4 5/32"	1/4"	5	7	11,5	169 - 242	1000	10,0	10
330406A6	4 5/32"	1/4"	6,35	10	14	178 - 251	1300	11,4	10
330506A6	5 3/16"	1/4"	6,35	10	14	181 - 254	1300	11,9	10
330606A6	6	1/4"	6,35	10	14	191 - 255	1300	12,0	10

Note: All break loads are determined by clevis pin and thread

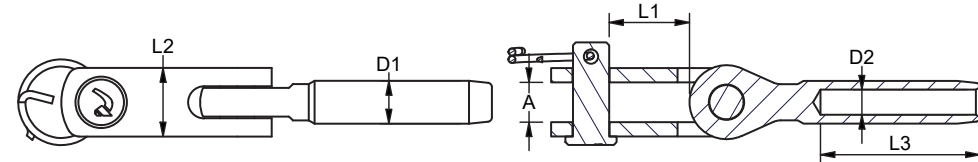


Body chromed according to DS/EN ISO 1456 class 4 with one layer of nickel thickness minimum 0,025 mm and one layer of chrome thickness minimum 0,003 mm. Bright finish.

LIFELINE SHORT TOGGLE

Polished stainless steel - AISI 316

ART. NO.	WIRE	PIN	A	D1	D2	L1	L2	L3	KG/100	PACK
506303GK	3 1/8"	6,35	7	6,35	3,4	14	12	26	3,3	10
506304GK	4 5/32"	6,35	7	7,5	4,4	14	12	28	3,5	10
506305GK	5 3/16"	6,35	7	9	5,3	14	12	30	3,9	10

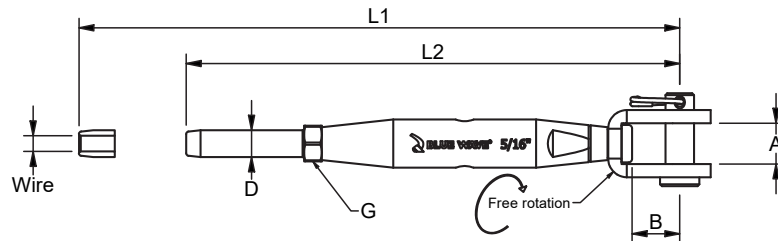


LIFELINE TURNBUCKLE

Polished stainless steel - AISI 316

Features a swivel for one side adjustment

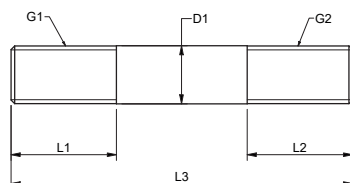
ART. NO.	WIRE	G	PIN	A	B	D	L1	L2	BL/KG	KG/100	PACK
GR120408A	4 5/32"	5/16"	5/16"	11	13,5	7,5	206	166	1450	12,5	10
GR120508A	5 3/16"	5/16"	5/16"	11	13,5	9	214	174	2050	13,4	10
GR126308A	1/4"	5/16"	5/16"	11	13,5	12,58	214	174	1520	13	10



PIN FOR GATE EYE

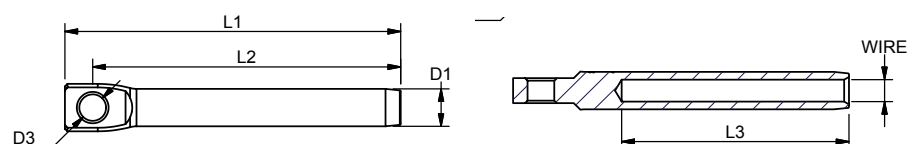
Polished stainless steel - AISI 316

ART. NO.	G1	G2	L1	L2	L3	D1	BL/KG	KG/100
GE930808A	5/16"	5/16"	14,5	14,5	47	8	2200	1,9

**LIFELINE AND STEERING WHEEL SWAGE EYE**

Polished stainless steel - AISI 316

ART. NO.	WIRE	D1	L1	L2	L3	D3	BL/KG	KG/100	PACK
640003	3	-	6,35	56	51	38	800	0,9	20
640032	-	1/8"	6,35	56	51	38	800	0,9	20
640004	4	5/32"	7,5	66,5	61	45	850	1,4	20
640005	5	3/16"	9	65	59,5	51	850	2,1	20
640005S	5	3/16"	9	78,5	71	51	1450	2,8	20
640006	6	-	12,58	101	91,5	64	3600	7,9	20
640063	-	1/4"	12,58	101	91,5	64	3600	7,7	20
640007	7	9/32"	14,2	110	98,5	70	4100	10,8	20

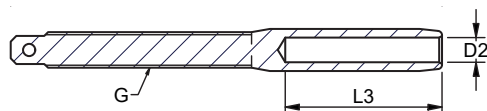
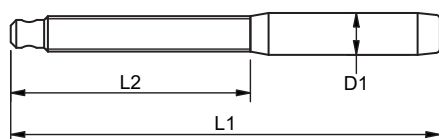




LIFELINE THREAD STUD

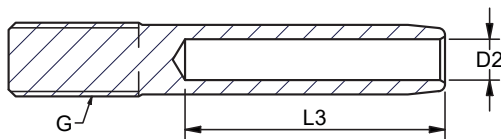
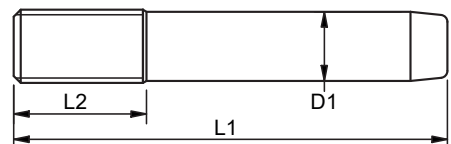
Polished stainless steel - AISI 316

ART. NO.	WIRE	G	D1	D2	L1	L2	L3	KG/100	PACK
GH900306A	3 1/8"	1/4"	6,35	3,4	79	43	26	1,8	10
GH903206A	3 1/8"	1/4"	6,35	3,5	74	43	26	1,6	10
GH900406A	4 5/32"	1/4"	7,5	4,4	81	43	28	2,0	10
GH900506A	5 3/16"	1/4"	9	5,3	83	43	30	2,4	10
GH900606A	6 1/4"	1/4"	9	6,5	90	43	40	2,2	10
GH900308A	3 1/8"	5/16"	6,35	3,4	79	48	26	2,5	10
GH900408A	4 5/32"	5/16"	7,5	4,4	81	48	28	2,7	10
GH900508A	5 3/16"	5/16"	9	5,3	83	48	30	3,1	10

**LIFELINE SHORT THREAD STUD**

Polished stainless steel - AISI 316

ART. NO.	WIRE	G	D1	D2	L1	L2	L3	KG/100	PACK
510308AK	3 1/8"	5/16"	6,35	3,4	45	14	26	1,1	10
510408AK	4 5/32"	5/16"	7,5	4,4	47	14	28	1,3	10
510508AK	5 3/16"	5/16"	9	5,3	49	14	30	1,7	10



ROPE FITTINGS

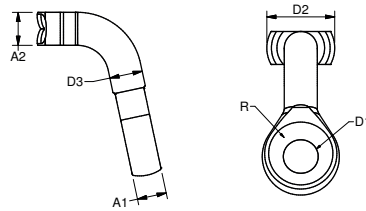
With eye catching design and solid constructions our rope fittings provides a wide range of opportunities to combine rope from 5/32" to 5/8" with standard rig fittings.



SMALL T ROPE EYE

Polished Stainless Steel - AISI 316

ART. NO.	ROPE	A1	A2	D1	D2	D3	R	LB/100	PACK	FITS BACKING PLATE:
616506F	1/8"	3/16"	1/4"	19/64"	19/32"	1/4"	3/32"	3	10	616103
616507F	3/32"	1/4"	19/64"	3/8"	23/32"	19/64"	1/8"	7	10	616105
616508F	3/32"	5/16"	11/32"	3/8"	23/32"	11/32"	5/32"	9	10	616105
616512F	3/16" - 1/2"	13/32"	9/16"	17/32"	1 5/32"	9/16"	3/16"	27	10	616107
616516F	9/32" - 5/16"	9/16"	23/32"	11/16"	1 13/32"	23/32"	9/32"	60	10	616110



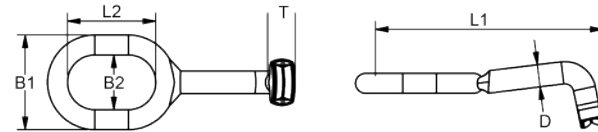
The rope T eyes fit standard T backing plates. Existing wire rigs can be replaced with fiber ropes.



T ROPE EYE

Polished stainless steel - AISI 316

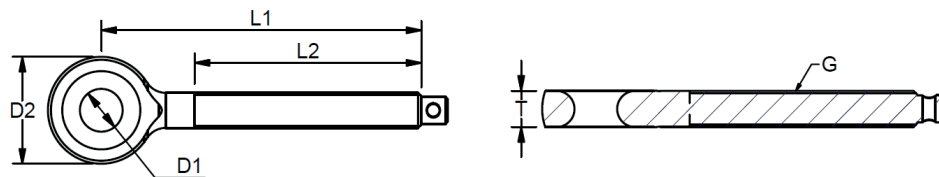
ART. NO.	ROPE	B1	B2	D	L1	L2	T	BL/LB	LB/100	PACK
616506	1/8"	1 1/16"	9/16"	1/4"	3 3/16"	1"	1/4"	1764	8	BULK
616507	3/16"	1 1/16"	9/16"	5/16"	3 3/8"	1"	5/16"	3968	9	BULK
616509	3/16"	1 1/2"	7/8"	3/8"	3 15/16"	1 5/16"	3/8"	6173	19	BULK
616512	1/4"	1 1/2"	7/8"	1/2"	4 5/16"	1 5/16"	1/2"	9039	22	BULK



ROPE THREAD EYE FOR GATE HOOK

Polished stainless steel - AISI 316

ART. NO. RIGHT	G	D1	D2	L1	L2	T	BL/KG	KG/100	PACK
021906AF	1/4"	7	17	60	47	5	1300	2	10
021908AF	5/16"	9	23	73,5	57	7	2200	4,2	10

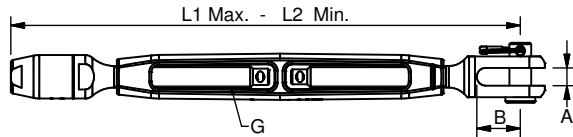




TURNBUCKLE WITH ROPE STUD

Polished stainless steel - AISI 316 and chromed bronze body

ART. NO.	G	ROPE	PIN	A	B	L1	L2	BL/KG	KG/100
RP130408A	5/16"	4	8	7	16	261	187	1700	76,1

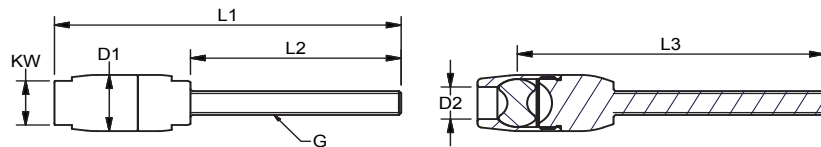


Body chromed according to DS/EN ISO 1456 class 4 with one layer of nickel thickness minimum 0,025 mm and one layer of chrome thickness minimum 0,003 mm. Bright finish.

SMALL ROPE THREAD FOR LIFELINE AND GATEHOOK

Polished stainless steel - AISI 316

ART. NO.	ROPE	G	KW	D1	D2	L1	L2	L3	BL/KG	KG/100
RP800406K	4	M6	11	14	8	56	25	47	1100	3,4
RP800406S	4	M6	11	14	8	79	48	70	1100	3,9
RP800508K	5	M8	13	17	9	64	30	51	1700	5,4
RP800508S	5	M8	13	17	9	91	57	78	1700	6,5
RP800608K	6	M8	13	18	10	67	30	55	2200	6,3
RP800608S	6	M8	13	18	10	94	57	82	2200	7,4
* RP801208K	12	M8	18	20	12	85	30	68	2500	8,7
* RP801208XS	12	M8	18	20	12	112	57	95	2500	9,9

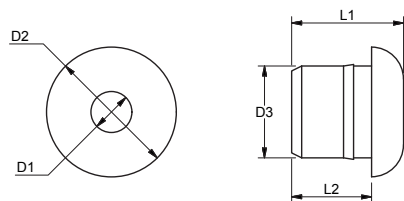


Community Design Registration 14/6 2017

ROPE RELIEF

Nylon

ART. NO.	D1	D2	D3	L1	L2	FOR HOLE SIZE	KG/100	PACK
A6504	4,1	13	9,2	11,2	8	9	0,1	100
A6505	5,7	14	10,2	13,1	10	10	0,13	100
A6506	6,4	14	10,2	13,1	10	10	0,12	100
A6508	8,4	15,6	13,2	13,1	10	13	0,14	100



Black split bushing for push or glue in. Reduces wear on the rope.

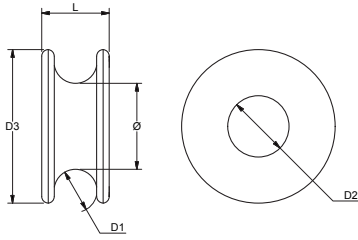




LOW FRICTION RING

Black hard anodized 6061 aluminium

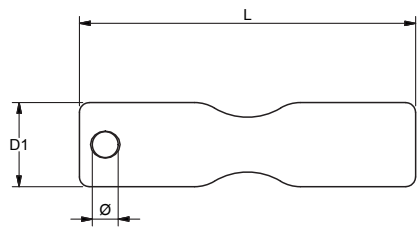
ART. NO.	ROPE	Ø	D1	D2	D3	L	KG/100
RA1105	4 - 5	11	5	7	18	9	0,1
RA1107	6 - 7	15	7	10	25	12	0,2
RA1110	8 - 10	19	10	14	35	15	0,6
RA1114	12 - 14	28	14	20	50	22	1,4



ROPE BONE

Polished stainless steel - AISI 316 and black anodized aluminium

ART. NO. STAINLESS STEEL	ART. NO. ALUMINIUM	ROPE	Ø	D1	L
RP0608	RA0608	3	3	8	36
RP0610	RA0610	3 - 5	4	10	45
RP0612	RA0612	5 - 7	4	13	52



TOGGLES

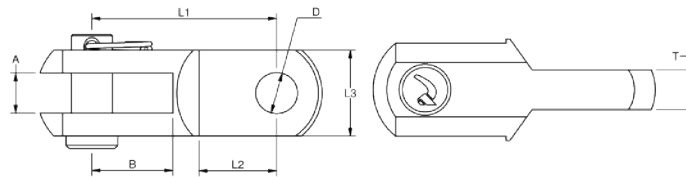


TOGGLES

Polished stainless steel - AISI 316

ART. NO.	PIN	A	B	D	T	L1	L2	L3	BL/LB	LB/100	PACK
140606M	1/4"	1/4"	33/64"	1/4"	7/32"	1 1/8"	7/16"	15/32"	2866	4	BULK
140808M	5/16"	5/16"	5/8"	5/16"	9/32"	1 11/32"	33/64"	5/8"	5732	9	BULK
140909M	3/8"	3/8"	3/4"	3/8"	11/32"	1 5/8"	21/32"	3/4"	7716	16	BULK
141111M	7/16"	7/16"	7/8"	7/16"	3/8"	1 29/32"	3/4"	29/32"	9039	28	BULK
141313M	1/2"	1/2"	31/32"	1/2"	1/2"	2 1/4"	15/16"	1 1/16"	13669	47	BULK
141616M	5/8"	5/8"	1 1/4"	21/32"	17/32"	2 3/4"	1 1/8"	1 5/16"	21605	78	BULK
141919M	3/4"	3/4"	1 1/2"	3/4"	23/32"	3 1/2"	1 17/32"	1 5/8"	28660	165	BULK
142222M	7/8"	7/8"	1 23/32"	7/8"	13/16"	3 29/32"	1 5/8"	1 7/8"	37479	239	BULK
142525M	1"	1"	2"	1 1/32"	15/16"	4 13/32"	1 23/32"	2 3/32"	52911	346	BULK
142828M	1 1/8"	1 1/8"	2 5/16"	1 1/8"	1 1/16"	5 1/8"	1 7/8"	2 5/16"	66139	598	BULK
143232M	1 1/4"	1 1/4"	2 17/32"	1 5/16"	1 7/32"	5 19/32"	2 3/32"	2 9/16"	83776	811	BULK

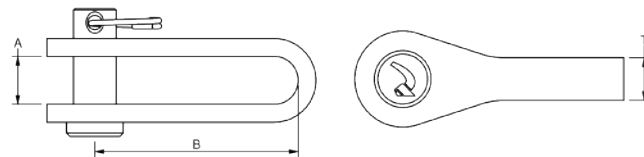
Note: All break loads are determined by clevis pin



EYE/JAW STRAP TOGGLES

Polished stainless steel - AISI 316

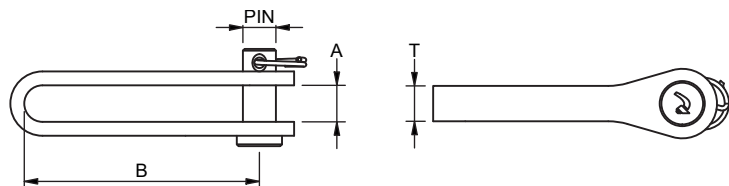
ART.NO.	PIN	A	B	T	BL/LB	LB/100	PACK
140006	15/64"	19/64"	1 1/8"	9/32"	3968	5	10
140008	5/16"	11/32"	1 11/32"	5/16"	7937	9	10
140010	3/8"	13/32"	1 25/32"	13/32"	8818	13	10
140011	7/16"	7/16"	1 31/32"	13/32"	10582	19	10
140012	15/32"	17/32"	2 7/32"	15/32"	12787	27	10
140016	5/8"	21/32"	2 15/32"	19/32"	17637	50	10
140019	3/4"	13/16"	2 3/4"	23/32"	28660	90	10
140022	7/8"	31/32"	3 5/8"	31/32"	37479	178	10
140025	1"	1 3/16"	4 3/32"	31/32"	63934	231	BULK
140028	1 1/8"	1 1/4"	4 3/4"	1 3/16"	79366	324	BULK



TOGGLES XL

Polished stainless steel - AISI 316

ART. NO.	PIN	A	B	T	BL/LB	LB/100	PACK
RF1410	3/8"	13/32"	2 43/64"	13/32"	4000	7,8	10
RF1411	7/16"	29/64"	2 61/64"	13/32"	4800	9,8	10
RF1412	1/2"	17/32"	3 5/16"	15/32"	5800	15,2	10
RF1416	5/8"	43/64"	3 45/64"	19/32"	8000	26,9	10
RF1419	3/4"	53/64"	4 9/64"	45/64"	13000	51	10
RF1422	7/8"	63/64"	5 7/16"	63/64"	17000	81,8	10

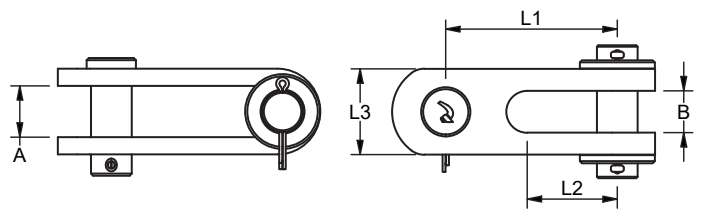


XL toggles are 50 % longer than standard toggles.

MASTHEAD TOGGLES

Polished stainless steel - AISI 316

ART. NO.	PIN	A	B	L1	L2	L3	BL/LB	LB/100	PACK
MH2511	7/16"	19/32"	7/16"	1 13/16"	29/32"	1 3/16"	9039	38,8	BULK
MH2512	1/2"	45/64"	1/2"	2 3/64"	1 1/32"	1 3/16"	13669	46,3	BULK
MH2516	5/8"	25/32"	5/8"	2 9/16"	1 17/64"	1 3/8"	21605	41,4	BULK
MH2519	3/4"	15/16"	3/4"	3 5/64"	1 17/32"	1 37/64"	28660	91,3	BULK
MH2522	7/8"	1 1/32"	7/8"	3 35/64"	1 13/16"	1 31/32"	37479	242,5	BULK
MH2525	1"	1 9/64"	1"	4 21/64"	2 7/16"	2 23/64"	52911	413,6	BULK



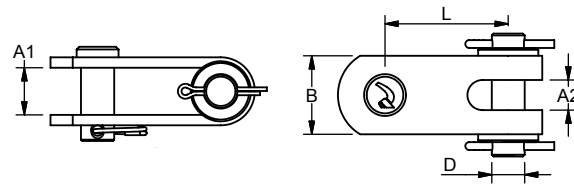
DOUBLE JAW TOGGLES

Polished stainless steel - AISI 316



ART. NO.	PIN	A1	A2	B	D	L	BL/LB	LB/100	PACK
250008	5/16"	13/32"	7/32"	23/32"	5/16"	1 3/16"	5181	13	BULK
250010	3/8"	15/32"	1/4"	7/8"	3/8"	1 1/2"	7716	26	BULK
250011	7/16"	19/32"	3/8"	1 3/16"	7/16"	1 5/8"	9039	40	BULK
250012	1/2"	23/32"	7/16"	1 3/16"	1/2"	1 7/8"	13669	53	BULK
250014	9/16"	23/32"	7/16"	1 3/8"	9/16"	2"	20700	78	BULK
250016	5/8"	25/32"	17/32"	1 3/8"	5/8"	2 1/4"	21605	90	BULK
250019	3/4"	15/16"	11/16"	1 9/16"	3/4"	2 15/32"	28660	154	BULK
250022	7/8"	1 1/32"	3/4"	1 31/32"	7/8"	2 27/32"	37479	192	BULK
250025	1"	1 5/32"	7/8"	2 3/8"	31/32"	3 7/32"	52911	236	BULK
250028	1 1/8"	1 11/32"	1 1/8"	2 3/8"	1 1/8"	3 13/16"	56218	516	BULK
250032	1 1/4"	1 9/16"	1 11/32"	2 15/16"	1 1/4"	4 1/8"	68343	750	BULK
250035	1 3/8"	1 23/32"	1 11/32"	2 15/16"	1 3/8"	4 21/32"	94799	1036	BULK
250040	1 9/16"	1 7/8"	1 17/32"	3 3/4"	1 9/16"	5 15/32"	152119	1243	BULK

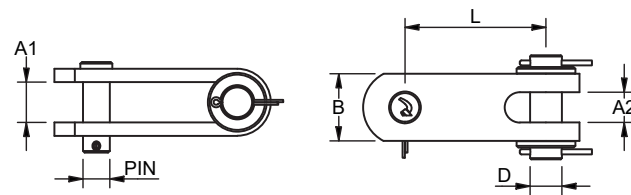
The user is responsible for choosing the proper cable diameter and for correct assembly



STEP DOWN DOUBLE JAW TOGGLES

Polished stainless steel - AISI 316

ART. NO.	PIN	A1	A2	B	D	L	BL/LB	LB/100	PACK
25001916	5/8"	15/16"	11/16"	1 9/16"	3/4"	3 5/16"	21605	176,8	BULK
25002219	3/4"	1 1/32"	3/4"	1 31/32"	7/8"	3 1/2"	28660	257,3	BULK
25002522	7/8"	1 1/32"	7/8"	2 3/8"	31/32"	4"	37479	429,9	BULK
25002825	1"	1 11/32"	1 1/8"	2 9/16"	1 1/8"	4 21/32"	52911	525,6	BULK





ACCESSORIES



LUBRICANT

Thread lubricant and seal for swageless terminal assembly

ART. NO.	NET. WEIGHT	LB/100
BWLUB1	50g	176.5
BWLUB2	30g	17.65
BWLUB3	5g	1.76



SCKIT - SEALING KIT

Thread lubricant and seal for swageless terminal assembly

ART. NO.	NET. WEIGHT	LB/100
SCKIT	6g	13



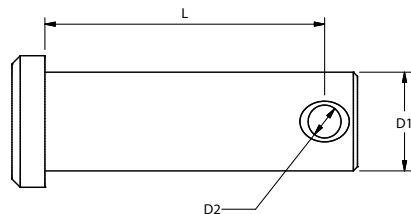
CLEVIS PINS

Polished stainless steel - AISI 316

ART. NO.	L	D1	D2	LB/100	PACK
061605	19/32"	3/16"	3/32"	1	BULK
061806	21/32"	15/64"	3/32"	2	BULK
061663	5/8"	1/4"	3/32"	2	BULK
061908	23/32"	5/16"	1/8"	2	BULK
062008	13/16"	5/16"	3/32"	2	BULK
062395	29/32"	3/8"	1/8"	3	BULK
062611	1 1/32"	7/16"	1/8"	5	BULK
062812	1 1/8"	15/32"	5/32"	7	BULK
062813	1 1/8"	1/2"	5/32"	8	BULK
063412	1 11/32"	15/32"	5/32"	9	BULK
063214	1 5/16"	9/16"	5/32"	12	BULK
063714	1 15/32"	9/16"	5/32"	12	BULK
063416	1 11/32"	5/8"	1/8"	14	BULK
064016	1 9/16"	5/8"	1/8"	17	BULK
064419	1 25/32"	3/4"	1/8"	29	BULK
064919	1 15/16"	3/4"	1/8"	31	BULK
064622	1 13/16"	7/8"	7/32"	36	BULK
065522	2 5/32"	7/8"	7/32"	42	BULK
065822	2 9/32"	7/8"	7/32"	44	BULK
065525	2 7/32"	1"	7/32"	55	BULK
066325	2 15/32"	31/32"	7/32"	62	BULK
067328	2 7/8"	1 1/8"	7/32"	88	BULK
068332	3 9/32"	1 1/4"	1/4"	132	BULK



Note:
Double headed and tamper proof pins available on request.

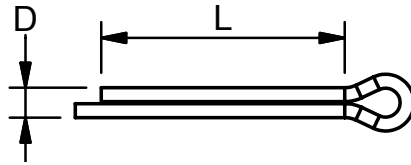


SPLIT PINS

Polished stainless steel - AISI 316



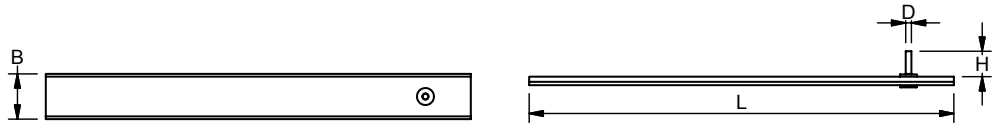
ART. NO.	D MM	L	LB/100	PACK
070609	1/16"	13/32"	0.02	100
0706101	3/32"	15/32"	0.07	100
070610	3/32"	19/32"	0.07	100
070611	3/32"	31/32"	0.11	100
0706121	3/32"	5/8"	0.15	100
070612	3/32"	31/32"	0.22	100
070613	1/8"	31/32"	0.33	50
070614	1/8"	1 1/4"	2.65	50
0706131	1/8"	25/32"	0.33	50
0706151	5/32"	1 1/4"	0.79	BULK
070617	3/16"	1 9/16"	1.65	BULK
070618	1/4"	1 31/32"	2.9	BULK
070620	5/16"	2 5/16"	6.8	BULK



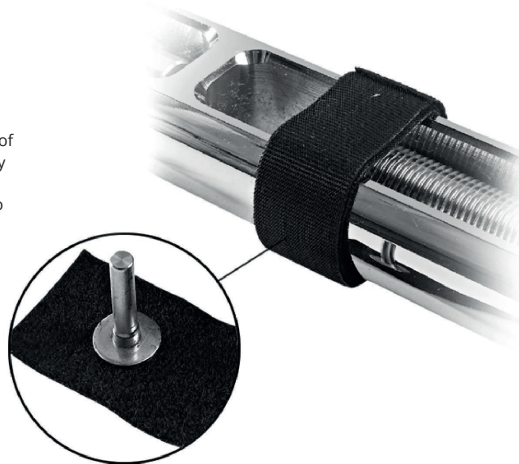
SMART PINS

Polished stainless steel - AISI 316 - one wrap® velcro

ART. NO. BULK	ART. NO. RETAIL PACK	SIZE	B	D	H	L	LB/100	PACK
VP1020	VP1020P4	1/4"	5/8"	3/32"	5/16"	4"	0.34	BULK
VP1225	VP1225P4	5/16" - 3/8"	5/8"	3/32"	13/32"	5 1/8"	0.49	BULK
VP1632	VP1632P4	7/16" - 1/2"	25/32"	1/8"	33/64"	7 1/8"	0.86	BULK
VP2340	VP2340P4	5/8" - 3/4"	25/32"	5/32"	25/32"	8 5/8"	1.15	BULK
VP3250	VP3250P4	7/8" - 1"	1"	13/64"	17/32"	11"	39,7	BULK



Split pin on velcro one-wrap® strap
The smart pins are a fast and new way of securing open body turnbuckles. Simply put the pin attached to the Velcro strap into the split hole and secure the Velcro strap around the rigging screw.



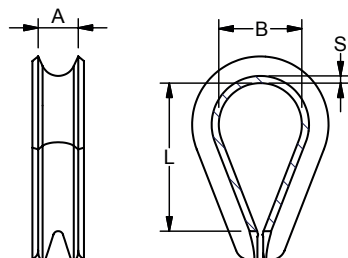
000449723

Community Design Registration
2006

THIMBLES

Polished stainless steel - AISI 316

ART. NO.	A	B	L	S	LB/100	PACK
110002	1/8"	11/32"	5/8"	1/32"	0.4	100
110003	5/32"	13/32"	21/32"	1/32"	0.7	100
110004	3/16"	7/16"	3/4"	1/16"	1.1	100
110005	15/64"	33/64"	13/16"	1/16"	1.5	100
110006	9/32"	19/32"	1 1/16"	1/16"	2	100
110007	5/16"	3/4"	1 5/16"	1/16"	3	100
110008	11/32"	7/8"	1 1/2"	3/32"	6	50
110009	13/32"	15/16"	1 11/16"	3/32"	7	50
110010	7/16"	1 1/16"	1 13/16"	3/32"	11	BULK
110012	9/16"	1 5/32"	2 1/16"	3/32"	15	BULK
110014	5/8"	1 5/16"	2 1/4"	1/8"	20	BULK
110016	23/32"	1 9/16"	2 5/8"	1/8"	25	BULK
110018	25/32"	1 25/32"	2 15/16"	5/32"	42	BULK
110020	7/8"	2 1/16"	3 5/16"	5/32"	69	BULK
110022	15/16"	2 7/32"	3 21/32"	3/16"	100	BULK
110026	1 1/8"	2 9/16"	4 13/32"	15/64"	148	BULK
110028	1 3/16"	3 5/32"	5 5/16"	7/32"	181	BULK
110032	1 11/32"	3 5/8"	6 5/16"	1/4"	243	BULK
110034	1 3/8"	4 1/8"	6 5/16"	15/64"	258	BULK
110036	1 1/2"	4 17/32"	6 15/16"	15/64"	313	BULK
110038	1 9/16"	4 23/32"	7 1/16"	5/16"	454	BULK
110040	1 5/8"	4 23/32"	7 9/16"	5/16"	485	BULK
110042	1 25/32"	5 29/32"	9 7/16"	5/16"	670	BULK

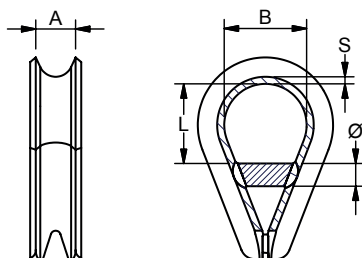


The solid thimbles from Blue Wave are known worldwide for supreme quality. A strong choice for the harsh marine environment.

THIMBLES WELDED

Polished stainless steel - AISI 316

ART. NO.	Ø	A	B	L	S	LB/100	PACK
119908	15/64"	11/32"	7/8"	7/8"	3/32"	6	25
119909	15/64"	13/32"	15/16"	15/16"	3/32"	7	25
119910	5/16"	7/16"	1 1/16"	1 1/16"	3/32"	13	25
119912	5/16"	9/16"	1 5/32"	1 5/32"	3/32"	14	25
119914	13/32"	5/8"	1 1/4"	1 1/4"	1/8"	27	10
119916	13/32"	23/32"	1 9/16"	1 9/16"	1/8"	30	10
119918	15/32"	25/32"	1 25/32"	1 25/32"	5/32"	53	10
119920	15/32"	7/8"	1 31/32"	1 31/32"	5/32"	77	10
119922	5/8"	15/16"	2 7/32"	2 7/32"	3/16"	114	BULK



The reinforced thimble is based on the standard thimble but extra force is attained by the addition of a welded bar and ends being welded together. A good choice for wire and UHMWPE ropes.

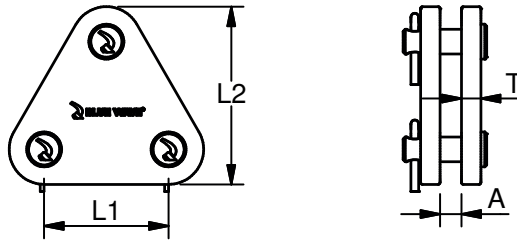


Two part triangle with pins for split backstays

BACKSTAY TRIANGLE

Polished stainless steel - AISI 316L

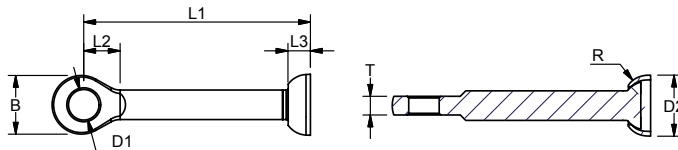
ART. NO.	UPPER PIN G	LOWER PIN	A	L1	L2	T	BL/LB	PACK
61TR6305M	1/4"	3/16"	15/64"	23/32"	1 3/16"	1/8"	2866	BULK
61TR6363M	1/4"	1/4"	15/64"	23/32"	1 3/16"	1/8"	2866	BULK
61TR0863M	5/16"	1/4"	5/16"	29/32"	1 15/32"	5/32"	4850	BULK
61TR0808M	5/16"	5/16"	5/16"	29/32"	1 15/32"	5/32"	4850	BULK
61TR9508M	3/8"	5/16"	7/16"	1 1/8"	1 23/32"	5/32"	8378	BULK
61TR9595M	3/8"	3/8"	7/16"	1 1/8"	1 23/32"	5/32"	8378	BULK
61TR1395M	1/2"	3/8"	33/64"	1 3/8"	2 1/4"	3/16"	14330	BULK
61TR1313M	1/2"	1/2"	33/64"	1 3/8"	2 1/4"	3/16"	14330	BULK
61TR1613M	5/8"	1/2"	21/32"	1 23/32"	2 27/32"	15/64"	24692	BULK
61TR1616M	5/8"	5/8"	21/32"	1 23/32"	2 27/32"	15/64"	24692	BULK



BALL EYE

Polished stainless steel - AISI 316

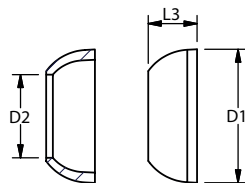
ART. NO.	WIRE	B	D1	D2	L1	L2	L3	T	R	KG/100	PACK
19620926	5	21	10,5	26	83	16	11	6	10	6,9	BULK
19621226	6	25	13	26	98,5	15,5	11	8	10	12,2	BULK
19621426	7	27	13	26	106	18,5	10	9	10	16,6	BULK
19621634	8	30	16,5	34	128	21,5	12	10	15	24,9	BULK



BALL CUP

Polished stainless steel - AISI 316

ART. NO.	WIRE	D1	D2	L3	LB/100	PACK
626204	3 - 4	1/8" - 5/32"	1 1/32"	11/32"	7/16"	2
626205	5	3/16"	1 1/32"	7/16"	7/16"	2
626207	6 - 7	15/64" - 9/32"	1 1/32"	5/8"	3/8"	2
626212	8 - 10	5/16" - 13/32"	1 11/32"	25/32"	15/32"	3
626212X	12	15/32"	1 11/32"	27/32"	15/32"	3 ON REQUEST

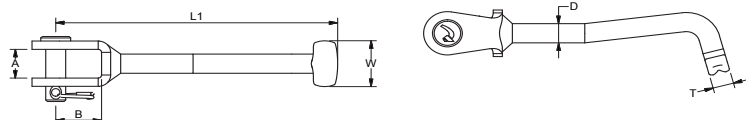


T FORKS

Polished stainless steel - AISI 316

ART. NO.	PIN	T	A	B	D	W	L1	BL/KG	KG/100	PACK	Fits back plates:		
											BW	Navtec	Swedish BP
613406	6	6,35	9,5	13	6,4	13,5	83,5	1300	3,8	BULK	616103	740-3	507-553
613408	8	7,5	11	15	7,5	16,5	93	2600	7,4	BULK	616105	740-4	507-553
613495	9,5	9	12	19	9	18,5	104	3800	11,5	BULK	616105	740-4	507-551
613412	12	12,58	14	25	12,6	27,5	130	6900	22,3	BULK	616107	740-7	507-552

Note: All break loads are determined by clevis pin



www.bluewave.dk

Blue Wave reserves the right to change specifications and descriptions contained in the Marine catalog with no notification. 2024 - 1. edition.