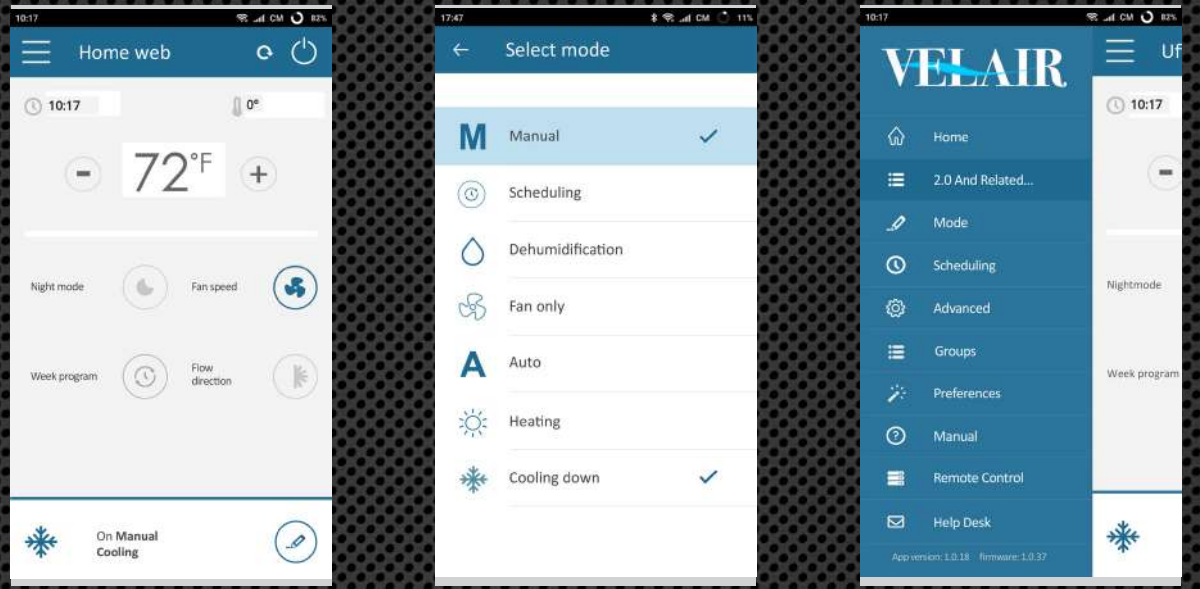


# VelAir Cabin Control Display With Wi-Fi

## Use Your Smart Phone to Manage Your Marine Thermostat Via Wi-Fi, On or Off the Boat

Use any smart phone, tablet or computer to monitor all of your air conditioning functions from a remote location, such as your car, office or home.

- Manage all VelAir systems from a remote location
- Built-in Wi-Fi enables A/C, on or off the boat
- Cool down yacht before you arrive dockside
- Free iOS and Android apps available Plug-n-play Wi-Fi software
- Intuitive, easy-to-use graphical user interface
- Schedule start-up and shut-down times or temperature changes



## VelAir Marine Cabin Control Display Offers Ease of Use and Superior Features

VelAir's display control uses the very latest microcontroller and TFT LCD technology. Featuring a user friendly, 2.5" color touch screen, it is designed for use with direct-expansion, reverse-cycle air conditioning systems.

- Low-profile panel
- Easy installation – no large wall cutout required
- Easy to use
- Bright LED display
- Night mode function is minimal fan speed
- Built-in inside temperature sensor



## VelAir Provides Engineering A/C Excellence & Comfort



### Includes These Top Manufacturers:

Rio Yacht  
MV Marine  
C Catamarans  
Cobrey Yachts  
Ranieri International

Invictus  
Al Suwaidi  
Tes Yacht  
Century Marine  
Agena Marine

NPSK  
Tecnorib  
Zar Formenti



Contact Uflex today to put your customers on board with the best in performance.

6442 Parkland Drive | Sarasota, FL 34243 | 941.351.2628 | Sales@uflexUSA.com | www.UflexUSA.com



VelAir revolutionizes self-contained air conditioners by engineering a convergence of a Wi-Fi control with variable speed drive technology—achieving 98% efficiency—with convenient smart phone control of your yacht A/C, on or off the boat.

Key advantages of variable speed drive technology include soft starting without a power spike. This maximizes energy efficiency and reduces energy consumption and therefore the size of the generator. Additionally, the A/C reaches the set-point temperature faster.

The unique combination of the variable speed compressor and the electronic expansion valve results in a constant temperature air flow of  $\pm 1$  degree, meaning there is less temperature and humidity fluctuation.



Smart Control With Built-In Wi-Fi

Use any smart phone, tablet or computer to monitor all VelAir A/C functions from any remote location, such as your car, office or home.

- Ensure your boat is cool and comfortable before you arrive
- Free, easy-to-use app for iOS and Android



Variable-Speed Technology

Using variable-speed technology and a brushless motor, VelAir VSD consumes less power than competing systems. Without the high start-up loads of conventional systems, you can even use a smaller generator at a lower acquisition and operational cost.

- Inclined fan blades optimize air flow even at lower speeds
- VSD eliminates start-up spike
- Allows smallest generators
- Minimal noise and vibrations

The brushless fan motor with reverse blade design reduces noise and vibration to virtually silent operation. Auto regulation of the fan ensures reliable, zero-maintenance performance that operates well, even on weak shore power.

The inverter driven compressor and multi-injection heat exchanger guarantee the highest efficiency and reduced energy consumption. They can be powered by a small generator or DC-AC converter from the battery pack. Reverse-cycle heating is standard.

All units are light and compact with rugged high-quality stainless steel and aluminum materials designed for small and medium boats.



Electronic Expansion Valve

To ensure the best energy performance, VelAir is equipped with an electronically controlled expansion valve.

- Accurate control of the refrigerant flow
- Precise control of temperature
- Provides maximum performance in every situation
- R410A refrigerant

Synchronous brushless DC inverter driven compressor

Low-speed reverse fan blade

Permanent magnet fan motor

Electronic expansion valve

Wall-mounted control panel

Stainless-steel cabinet



VelAir's i-Line VSD series units feature built-in inversion technology for better efficiency, less power consumption and no more compressor start-up power spikes. VSD units offer top comfort with no temperature or humidity fluctuation and works properly even on smaller generators and weak shore power.

- VSD eliminates start-up spike
- Constant temperature output maximizes comfort
- Consumption reduction enables small generators
- Minimal fan noise and vibration
- Fan motor requires 30% less power
- Reverse-cycle for heat pump function
- 27K BTU/h unit can work with a 3.5 kW generator
- R410A environmentally safe refrigerant

High-efficiency units feature a quiet, brushless fan

Rotary compressor

Wall-mounted control panel and wireless remote controller

Multiple air outputs available

Pre-wired control box included

Stainless-steel drain pan



The series 7 self-contained air conditioner is compact, lightweight and easy to install. This high efficiency unit features a quiet, brushless fan and rotary compressor. Pre-wired control box is included.

Operation is done via wall-mounted control panel and/or wireless remote controller. The control panel features a Wi-Fi module that can be paired with a smart phone for operation over the internet.

- Super compact
- Reverse-cycle heat pump operation
- Low power consumption
- Available with two and three air outputs

Technical Specifications

Model	Compact i10 VSD	Compact i16 VSD	Compact i21 VSD	Compact i27 VSD
Cooling capacity range	3000 - 10000 BTU/h	4000 - 16000 BTU/h	7000 - 21000 BTU/h	9000 - 27000 BTU/h
Power supply voltage	115V - 50/60Hz	115V - 50/60Hz	115V - 50/60Hz	115V - 50/60Hz
Cooling power consumption at 115V	6.2 A	9.0 A	12.2 A	15.4 A
Protection	10 A	16 A	16 A	20 A
Wire size (minimum)	11AWG / 4 mm <sup>2</sup>	11AWG / 4 mm <sup>2</sup>	9AWG / 6 mm <sup>2</sup>	9AWG / 6 mm <sup>2</sup>
Maximum air flow	235 cfm / 400 m <sup>3</sup> /h	294 cfm / 550 m <sup>3</sup> /h	471 cfm / 800 m <sup>3</sup> /h	530 cfm / 900 m <sup>3</sup> /h
Flange(s) diameter	2 x 5 in / 125 mm	2 x 6 in / 150 mm	4 x 6 in / 150 mm	4 x 6 in / 150 mm
Minimum opening for return-air grille	62 sq in / 400 cm <sup>2</sup>	93 sq in / 600 cm <sup>2</sup>	124 sq in / 800 cm <sup>2</sup>	155 sq in / 1000 cm <sup>2</sup>
Minimum opening for supply-air grille (recommended)	39 sq in / 250 cm <sup>2</sup>	47 sq in / 300 cm <sup>2</sup>	62 sq in / 400 cm <sup>2</sup>	78 sq in / 500 cm <sup>2</sup>
Minimum seawater flow rate	3.7 gpm / 12 l/min	4.5 gpm / 17 l/min	5.3 gpm / 20 l/min	6.1 gpm / 23 l/min
Dimensions W x H x D	20.4 x 11.5 x 12.5 in 519 x 292 x 318 mm	22.7 x 11.5 x 13.6 in. 576 x 292 x 346 mm	30.7 x 12 x 14.8 779 x 306 x 377 mm	30.7 x 13.4 x 18.8 in 779 x 340 x 471 mm
Weight lbs. (kg)	59.5 lbs / 27 kg	66 lbs / 30 kg	83.8 lbs / 38 kg	97 lbs / 44 kg

Technical Specifications

Model	Series 7
Cooling capacity	7000 BTU/h
Power supply voltage	115V - 50/60Hz
Starting current at 115V	25 A
Cooling power consumption at 115V	6.2 A
Protection	10 A
Wire size (minimum)	12AWG / 2.5 mm <sup>2</sup>
Maximum air flow	206 cfm / 350 m <sup>3</sup> /h
Air duct diameter	2 x 4.75 in / 120 mm
Minimum opening for return-air grille	56 sq in / 360 cm <sup>2</sup>
Minimum opening for supply-air grille (recommended)	23 sq in / 150 cm <sup>2</sup>
Seawater minimum flow rate	2.11 gpm / 8 l/pm
Dimensions W x H x D	16.9 x 10.2 x 11.2 in 430 x 260 x 285 mm
Weight	51 lbs / 23.1 kg

